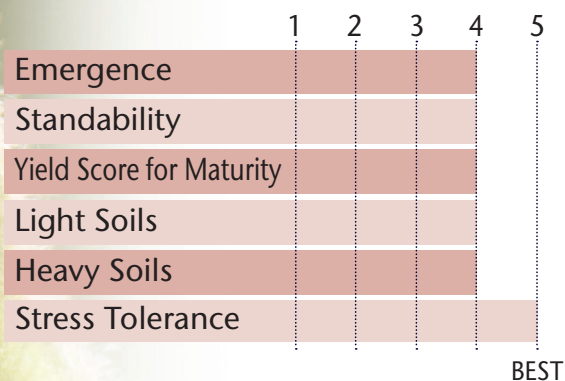


New Elite Genetics That  
Out-Yield LibertyLink® Lines By 2-4 Bu/Ac



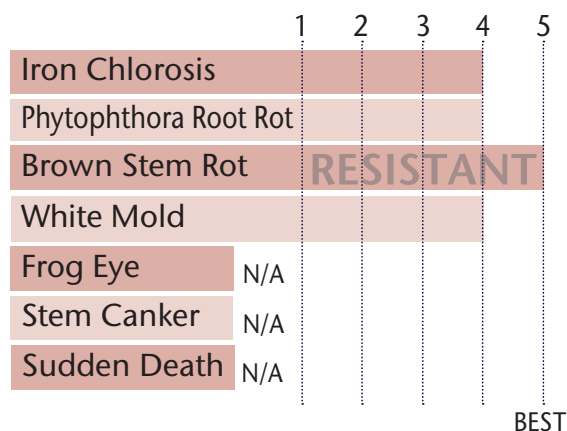
- Has very nice plant health for IDC, BSR, Rps 1c, SWM, and SCN
- Strong IDC soybean that can be taken across environments
- Medium plant height with nice width

### POSITIONING & ADAPTABILITY



5 = Excellent 4 = Very Good 3 = Average 2 = Below Average 1 = Poor  
\*All ratings presented are from past performance and do not ensure future results

### AGRONOMIC RATINGS



### PLANT CHARACTERISTICS

Flower Color	Purple
Pubescence Color	Lt Tawny
Pod Color	Tan
Hilum Color	Black
Plant Height	Medium
Plant Type	Bush
Protein Content	N/A
Oil Content	N/A
Estimated Seed Size	2400

Soybean Cyst Nematode (SCN)	PI 88.788
Phytophthora Root Rot Gene	Rc

5 = Excellent/Resistant 4 = Very Good 3 = Average 2 = Below Average 1 = Poor/Highly Susceptible  
\*All ratings presented are from past performance and do not ensure future results

#### Phytophthora Root Rot Gene Resistance

Ra = Rps 1a = resistance to races 1-2, 10-13, 15-19

Rc = Rps 1c = resistance to races 1-3, 6-11, 13, 15, 17, 21, 23, 24

Rk = Rps 1k = resistance to races 1-11, 13-15, 17-18, 21, 22

R3a = Rps3a = resistance to races 1-5, 8, 9, 11, 13, 14, 16, 18, 23, 25

NG = No specific gene

Ha, Hc, and Hk = Heterozygous for specific gene

### AREA OF ADAPTATION

