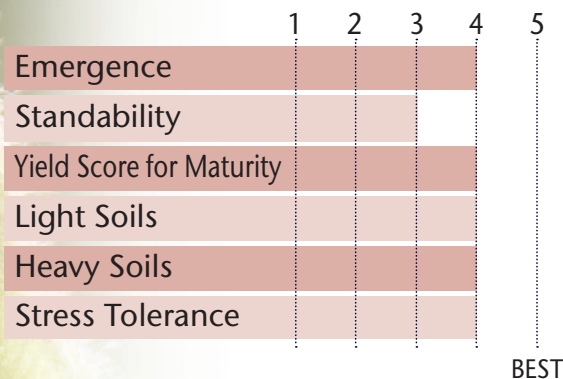


Medium Tall, Light Tawny Tan  
With Well Rounded Defensive Support



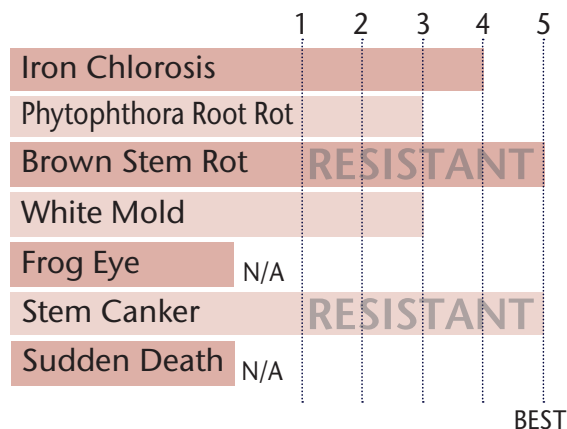
- Consistent yield performance from east to west
- Rps 1k gene for PRR protection
- Stem Canker and BSR resistant
- 2 years of excellent yielding test results

### POSITIONING & ADAPTABILITY



5 = Excellent 4 = Very Good 3 = Average 2 = Below Average 1 = Poor  
\*All ratings presented are from past performance and do not ensure future results

### AGRONOMIC RATINGS



### PLANT CHARACTERISTICS

Flower Color	Purple
Pubescence Color	Lt Tawny
Pod Color	Tan
Hilum Color	Black
Plant Height	Medium Tall
Plant Type	Intermediate - Bush
Protein Content	N/A
Oil Content	N/A
Estimated Seed Size	N/A

Soybean Cyst Nematode (SCN)	PI 88.788
Phytophthora Root Rot Gene	Rk

5 = Excellent/Resistant 4 = Very Good 3 = Average 2 = Below Average 1 = Poor/Highly Susceptible  
\*All ratings presented are from past performance and do not ensure future results

#### Phytophthora Root Rot Gene Resistance

Ra = Rps 1a = resistance to races 1-2, 10-13, 15-19

Rc = Rps 1c = resistance to races 1-3, 6-11, 13, 15, 17, 21, 23, 24

Rk = Rps 1k = resistance to races 1-11, 13-15, 17-18, 21, 22

R3a = Rps3a = resistance to races 1-5, 8, 9, 11, 13, 14, 16, 18, 23, 25

NG = No specific gene

Ha, Hc, and Hk = Heterozygous for specific gene

### AREA OF ADAPTATION

