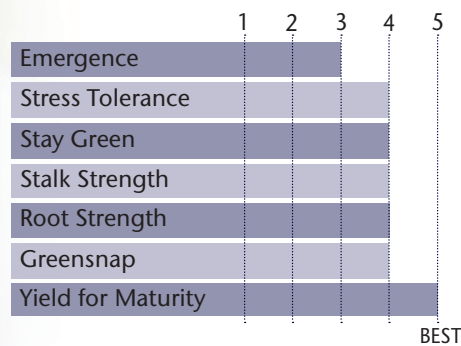


New Hybrid With Next Level Test Weight



- Very good Goss' Wilt and low greensnap risk
- Responds to fungicide applications very well
- Strong stalks and good roots give it a clean fall appearance
- Moves north of zone well

AGRONOMIC CHARACTERISTICS



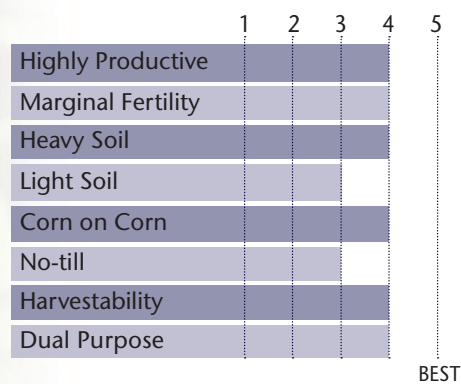
GDU to Flowering	1300
GDU to Black Layer	2590
Refuge Requirement	5% RIB
Herbicide Tolerance	RR

PLANT & EAR CHARACTERISTICS

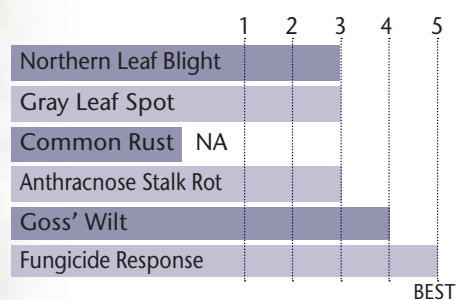
Leaf Angle	Semi Erect
Plant Height	Medium Tall
Ear Height	Medium
Ear Type	Semi-Determinate
Population	Medium - Medium High
Test Weight	5

Test Weight Rating Scale (1-5)
A higher score indicates a heavier test weight

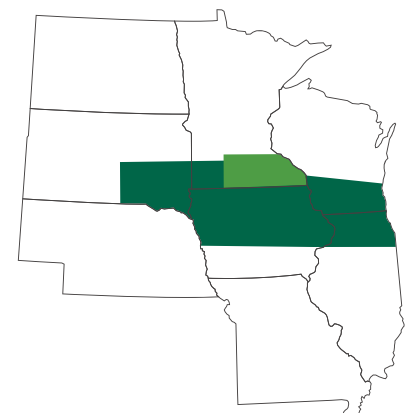
HYBRID POSITIONING & ADAPTABILITY



DISEASE TOLERANCE RATINGS



AREA OF ADAPTATION



5 = Excellent 4 = Very Good 3 = Average 2 = Below Average 1 = Poor
*All ratings presented are from past performance and do not ensure future results