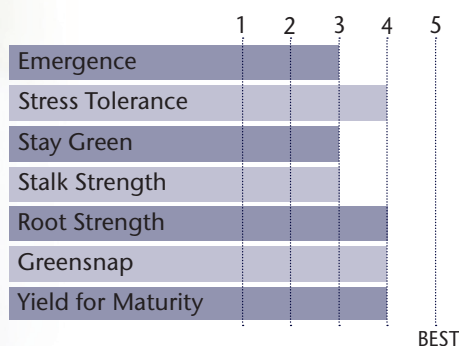


## New Hybrid For Wide Range Of Yield Environments



- Works best in zone and moving south
- Very good plant disease package
- Timely harvest when south of zone
- Works well with various plant populations and has a good ear flex

### AGRONOMIC CHARACTERISTICS



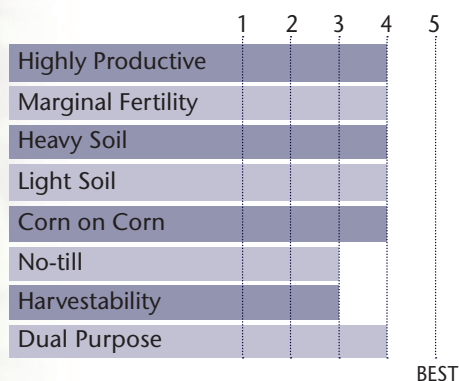
GDU to Flowering	1330
GDU to Black Layer	2675
Refuge Requirement	5% RIB
Herbicide Tolerance	RR

### PLANT & EAR CHARACTERISTICS

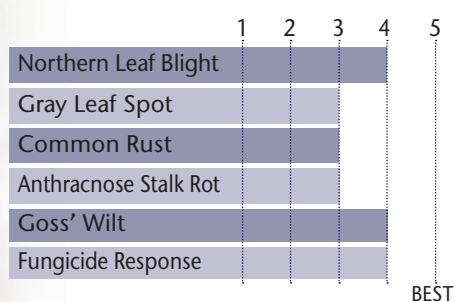
Leaf Angle	Semi-Erect
Plant Height	Medium Tall
Ear Height	Medium
Ear Type	Semi-Flex
Population	Medium-Medium High
Test Weight	3

Test Weight Rating Scale (1-5)  
A higher score indicates a heavier test weight

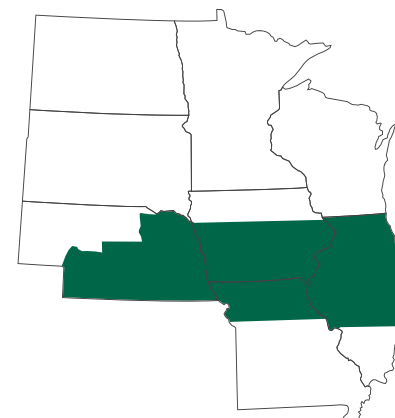
### HYBRID POSITIONING & ADAPTABILITY



### DISEASE TOLERANCE RATINGS



### AREA OF ADAPTATION



5 = Excellent 4 = Very Good 3 = Average 2 = Below Average 1 = Poor  
\*All ratings presented are from past performance and do not ensure future results