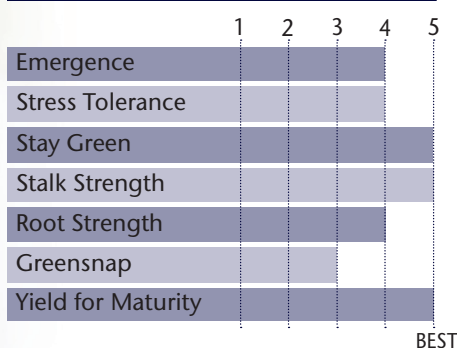


New Lead Hybrid With Excellent Health And Next Level Test Weight



- Very good early plant vigor
- Works across all soil types
- Semi-flex ear with the ability to work at moderate populations
- Strong stalks and roots aid in a clean fall appearance
- Keep in zone and move south

AGRONOMIC CHARACTERISTICS



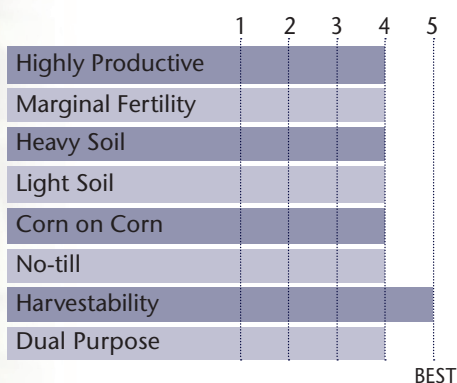
GDU to Flowering	1400
GDU to Black Layer	2810
Refuge Requirement	5% RIB
Herbicide Tolerance	RR

PLANT & EAR CHARACTERISTICS

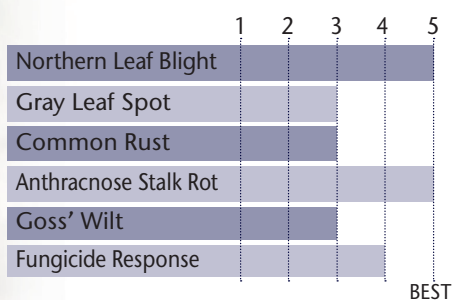
Leaf Angle	Horizontal
Plant Height	Medium Tall
Ear Height	Medium High
Ear Type	Semi-Flex
Population	Medium - Medium High
Test Weight	5

Test Weight Rating Scale (1-5)
A higher score indicates a heavier test weight

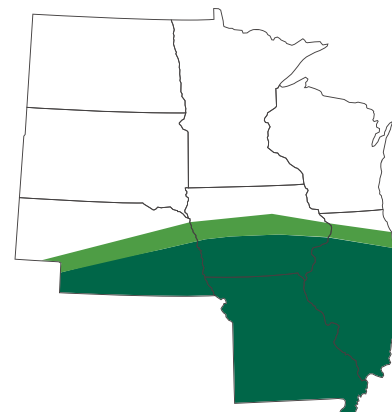
HYBRID POSITIONING & ADAPTABILITY



DISEASE TOLERANCE RATINGS



AREA OF ADAPTATION



5 = Excellent 4 = Very Good 3 = Average 2 = Below Average 1 = Poor
*All ratings presented are from past performance and do not ensure future results