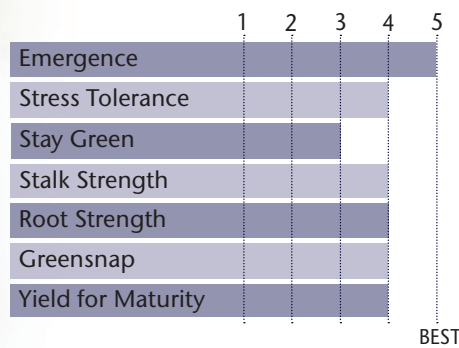


New Hybrid For Early Planting And Reduced Tillage



- Strong emergence and early plant vigor
- Wide adaptability across all yield environments
- Healthy with consistent girthy semi-flex ears
- Handles the tougher acre with its very good drought tolerance
- Very good stalks and roots aid for late harvestability

AGRONOMIC CHARACTERISTICS



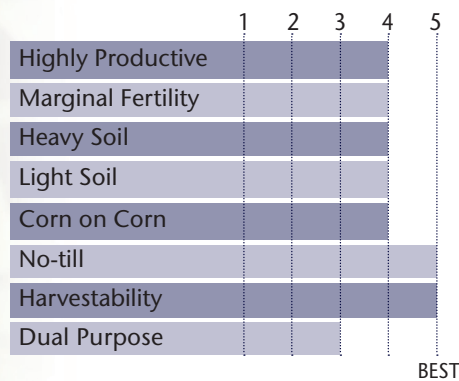
| | |
|---------------------|--------|
| GDU to Flowering | 1205 |
| GDU to Black Layer | 2275 |
| Refuge Requirement | 5% RIB |
| Herbicide Tolerance | RR |

PLANT & EAR CHARACTERISTICS

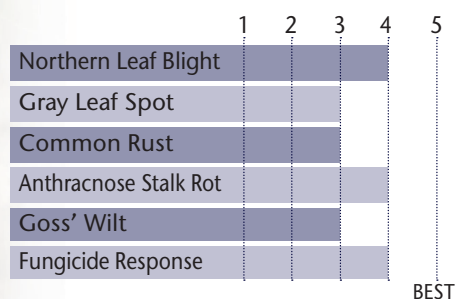
| | |
|--------------|----------------------|
| Leaf Angle | Semi-Erect |
| Plant Height | Medium |
| Ear Height | Medium |
| Ear Type | Semi-Flex |
| Population | Medium - Medium High |
| Test Weight | 3 |

Test Weight Rating Scale (1-5)
A higher score indicates a heavier test weight

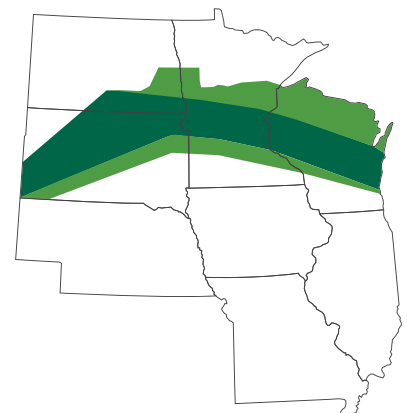
HYBRID POSITIONING & ADAPTABILITY



DISEASE TOLERANCE RATINGS



AREA OF ADAPTATION



5 = Excellent 4 = Very Good 3 = Average 2 = Below Average 1 = Poor
*All ratings presented are from past performance and do not ensure future results