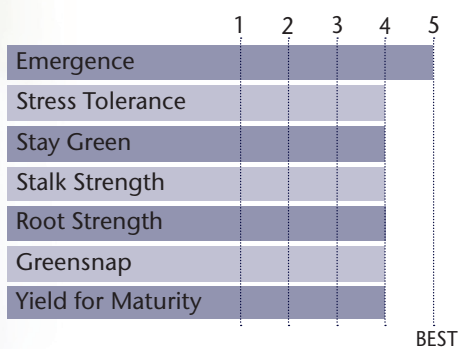


New Lead Hybrid With Consistent Ears And Kernel Depth



- Strong emergence and early plant vigor for early planting
- Very good Goss' Wilt tolerance and low greensnap risk
- Strong stalks and roots aid for a great Fall appearance
- Also available as 84-01

AGRONOMIC CHARACTERISTICS



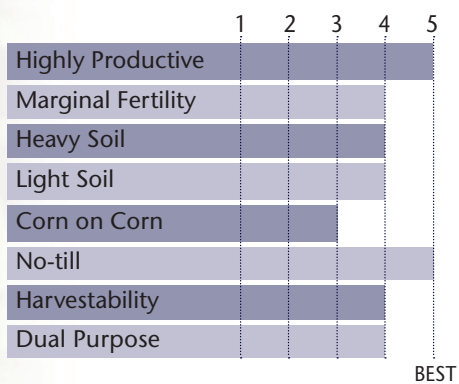
GDU to Flowering	1300
GDU to Black Layer	2560
Refuge Requirement	5% RIB
Herbicide Tolerance	RR

PLANT & EAR CHARACTERISTICS

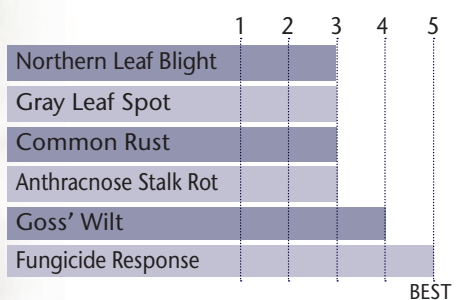
Leaf Angle	Semi-Erect
Plant Height	Medium Tall
Ear Height	Medium
Ear Type	Semi-Flex
Population	Medium - Medium High
Test Weight	3

Test Weight Rating Scale (1-5)
A higher score indicates a heavier test weight

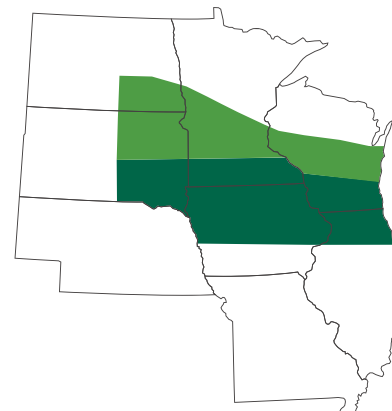
HYBRID POSITIONING & ADAPTABILITY



DISEASE TOLERANCE RATINGS



AREA OF ADAPTATION



5 = Excellent 4 = Very Good 3 = Average 2 = Below Average 1 = Poor
*All ratings presented are from past performance and do not ensure future results