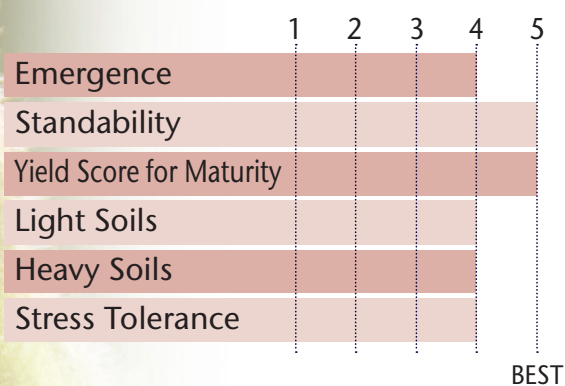


## Exciting Yield Potential With Top-Notch Standability



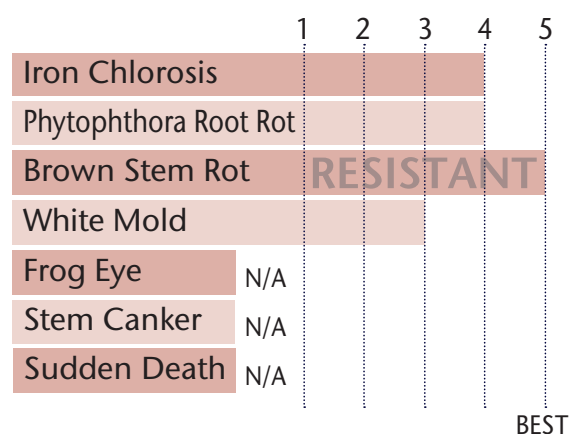
- Excellent IDC tolerance
- This soybean can be placed on all soil types and yield environments
- HRps 3a gene for PRR protection

### POSITIONING & ADAPTABILITY



5 = Excellent 4 = Very Good 3 = Average 2 = Below Average 1 = Poor  
 \*All ratings presented are from past performance and do not ensure future results

### AGRONOMIC RATINGS



BEST

### PLANT CHARACTERISTICS

Flower Color	Purple
Pubescence Color	Lt Tawny
Pod Color	Tan
Hilum Color	Brown
Plant Height	Medium
Plant Type	Intermediate
Protein Content	N/A
Oil Content	N/A
Estimated Seed Size	2500

Soybean Cyst Nematode (SCN)	PI 88.788
Phytophthora Root Rot Gene	Ha

5 = Excellent/Resistant 4 = Very Good 3 = Average 2 = Below Average 1 = Poor/Highly Susceptible  
 \*All ratings presented are from past performance and do not ensure future results

#### Phytophthora Root Rot Gene Resistance

Ra = Rps 1a = resistance to races 1-2, 10-13, 15-19

Rc = Rps 1 c = resistance to races 1-3, 6-11, 13, 15, 17, 21, 23, 24

Rk = Rps 1 k = resistance to races 1-11, 13-15, 17-18, 21, 22

R3a = Rps3a = resistance to races 1-5, 8, 9, 11, 13, 14, 16, 18, 23, 25

NG = No specific gene

Ha, Hc, and Hk = Heterozygous for specific gene

### AREA OF ADAPTATION

