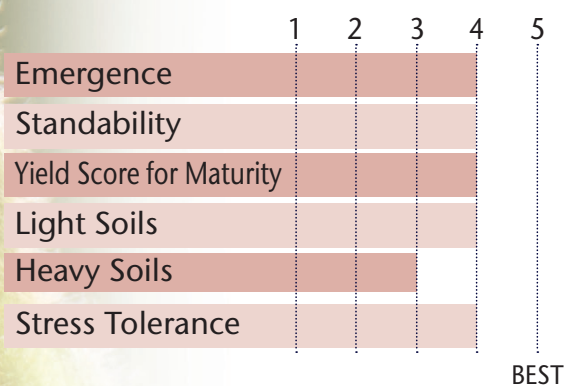




Solid Agronomics With Top-Notch Yield Performance In LibertyLink® Package

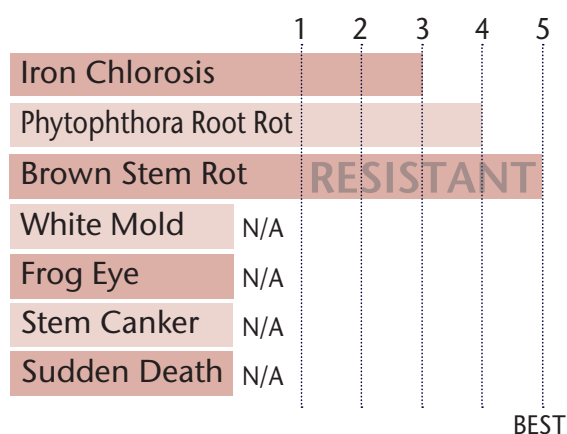
- Excellent emergence and early vigor
- Good field tolerance for PRR protection
- Excellent SCN tolerance
- Brown Stem Rot Resistant

POSITIONING & ADAPTABILITY



5 = Excellent 4 = Very Good 3 = Average 2 = Below Average 1 = Poor
 *All ratings presented are from past performance and do not ensure future results

AGRONOMIC RATINGS



BEST

PLANT CHARACTERISTICS

Flower Color	Purple
Pubescence Color	Lt Tawny
Pod Color	Tan
Hilum Color	Black
Plant Height	Medium Tall
Plant Type	Intermediate
Protein Content	N/A
Oil Content	N/A
Estimated Seed Size	2200

Soybean Cyst Nematode (SCN)	PI 88.788
Phytophthora Root Rot Gene	NG

5 = Excellent/Resistant 4 = Very Good 3 = Average 2 = Below Average 1 = Poor/Highly Susceptible
 *All ratings presented are from past performance and do not ensure future results

Phytophthora Root Rot Gene Resistance

Ra = Rps 1a = resistance to races 1-2, 10-13, 15-19

Rc = Rps 1 c = resistance to races 1-3, 6-11, 13, 15, 17, 21, 23, 24

Rk = Rps 1 k = resistance to races 1-11, 13-15, 17-18, 21, 22

R3a = Rps3a = resistance to races 1-5, 8, 9, 11, 13, 14, 16, 18, 23, 25

NG = No specific gene

Ha, Hc, and Hk = Heterozygous for specific gene

AREA OF ADAPTATION

