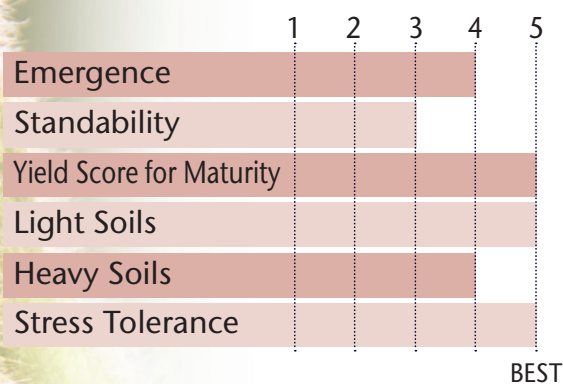


A Top Choice for Roundup Ready 2 Xtend™
Acres In The Central & Western Corn Belt



- Good tolerance to Sudden Death Syndrome
- Resistant to Brown Stem Rot
- Good field tolerance for PRR protection

POSITIONING & ADAPTABILITY



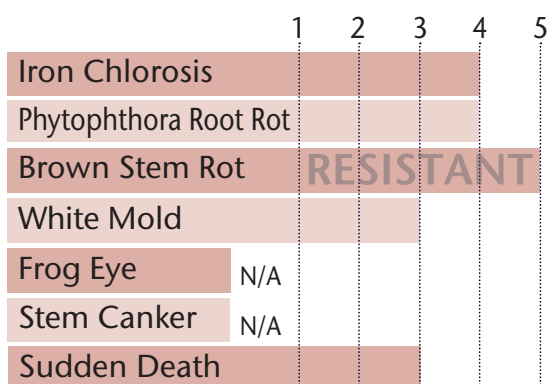
BEST

5 = Excellent 4 = Very Good 3 = Average 2 = Below Average 1 = Poor
*All ratings presented are from past performance and do not ensure future results

PLANT CHARACTERISTICS

Flower Color	Purple
Pubescence Color	Lt Tawny
Pod Color	Tan
Hilum Color	Black
Plant Height	Medium Tall
Plant Type	Intermediate
Protein Content	N/A
Oil Content	N/A
Estimated Seed Size	2700

AGRONOMIC RATINGS



BEST

Soybean Cyst Nematode (SCN) PI 88.788

Phytophthora Root Rot Gene NG

5 = Excellent/Resistant 4 = Very Good 3 = Average 2 = Below Average 1 = Poor/Highly Susceptible
*All ratings presented are from past performance and do not ensure future results

Phytophthora Root Rot Gene Resistance

Ra = Rps 1a = resistance to races 1-2, 10-13, 15-19

Rc = Rps 1 c = resistance to races 1-3, 6-11, 13, 15, 17, 21, 23, 24

Rk = Rps 1 k = resistance to races 1-11, 13-15, 17-18, 21, 22

R3a = Rps3a = resistance to races 1-5, 8, 9, 11, 13, 14, 16, 18, 23, 25

NG = No specific gene

Ha, Hc, and Hk = Heterozygous for specific gene

AREA OF ADAPTATION

