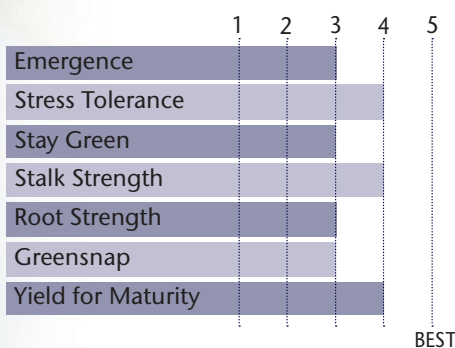


Agrisure Artesian® Hybrid With Big Yield Potential



- Superior stalk and root strength
- Very good dual purpose hybrid
- Widely adapted hybrid east to west
- Very good Goss' Wilt tolerance
- Also available as TP 61-94 ^{3110A} and TP 71-94 ^{3220A}

AGRONOMIC CHARACTERISTICS



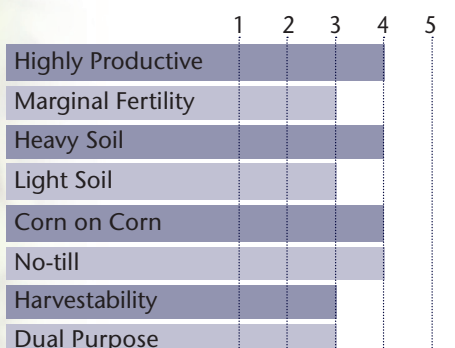
GDU to Flowering	1200
GDU to Black Layer	2300
Refuge Requirement	None
Herbicide Tolerance	None

PLANT & EAR CHARACTERISTICS

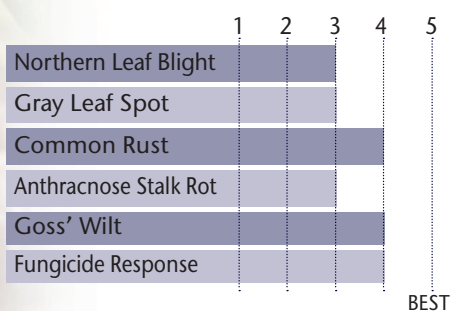
Leaf Angle	Horizontal
Plant Height	Medium Tall
Ear Height	Medium High
Ear Type	Semi-Flex
Population	Medium
Test Weight	4

Test Weight Rating Scale (1-5)
A higher score indicates a heavier test weight

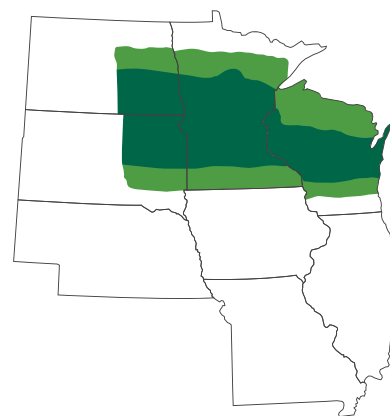
HYBRID POSITIONING & ADAPTABILITY



DISEASE TOLERANCE RATINGS



AREA OF ADAPTATION



5 = Excellent 4 = Very Good 3 = Average 2 = Below Average 1 = Poor
*All ratings presented are from past performance and do not ensure future results