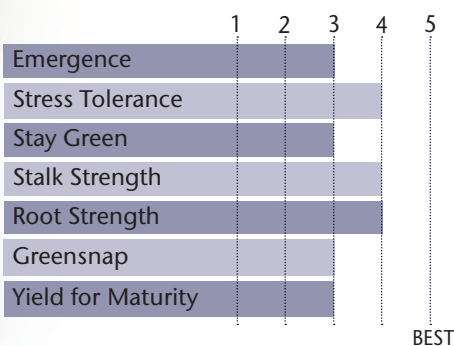


Conventional Hybrid With Agrisure Artesian® Technology



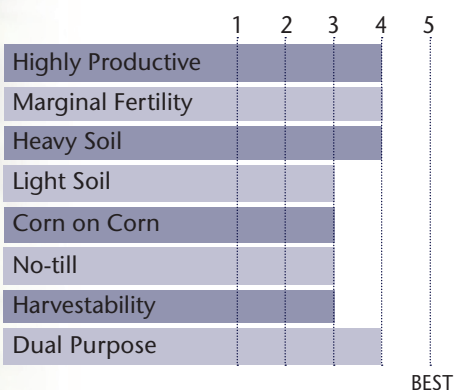
- Consistent, top-end yields with solid agronomics
- Very good stalks and roots
- Broadly adapted hybrid that works east to west
- Agrisure Artesian® technology provides additional drought tolerance to a proven hybrid
- Also available as TP 33-99_{5122A}

AGRONOMIC CHARACTERISTICS



GDU to Flowering	1270
GDU to Black Layer	2440
Refuge Requirement	None
Herbicide Tolerance	None

HYBRID POSITIONING & ADAPTABILITY

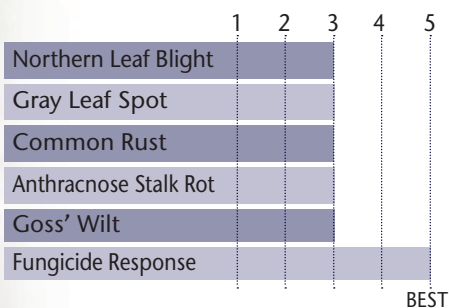


PLANT & EAR CHARACTERISTICS

Leaf Angle	Semi-Erect
Plant Height	Medium
Ear Height	Medium
Ear Type	Semi-Flex
Population	Medium - Medium High
Test Weight	3

Test Weight Rating Scale (1-5)
A higher score indicates a heavier test weight

DISEASE TOLERANCE RATINGS



AREA OF ADAPTATION

