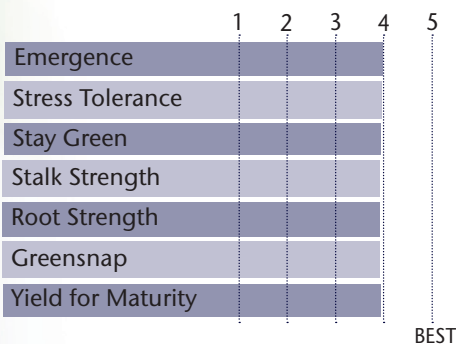


Contains ASR Tolerance Gene For Stalk Rot Control



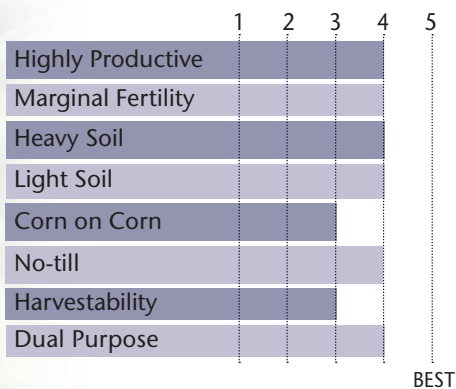
- Strong yield potential east to west
- Consistent across a variety of soil types
- Responds well to high plant populations
- High yielding hybrid with good plant health

AGRONOMIC CHARACTERISTICS



GDU to Flowering	1310
GDU to Black Layer	2695
Refuge Requirement	5% RIB
Herbicide Tolerance	RR

HYBRID POSITIONING & ADAPTABILITY

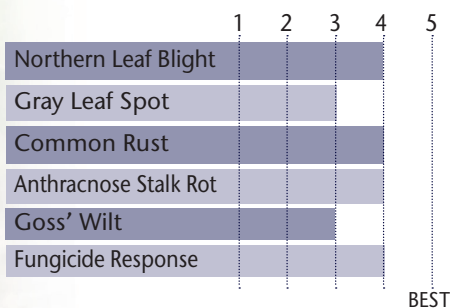


PLANT & EAR CHARACTERISTICS

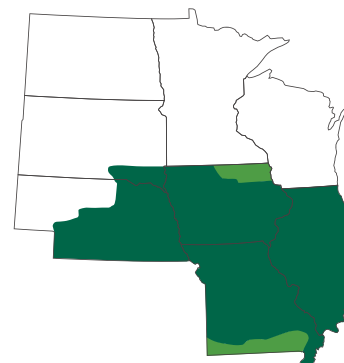
Leaf Angle	Semi-Erect
Plant Height	Medium Tall
Ear Height	Medium
Ear Type	Semi-Flex
Population	Medium - Medium High
Test Weight	4

Test Weight Rating Scale (1-5)
A higher score indicates a heavier test weight

DISEASE TOLERANCE RATINGS



AREA OF ADAPTATION



5 = Excellent 4 = Very Good 3 = Average 2 = Below Average 1 = Poor
*All ratings presented are from past performance and do not ensure future results