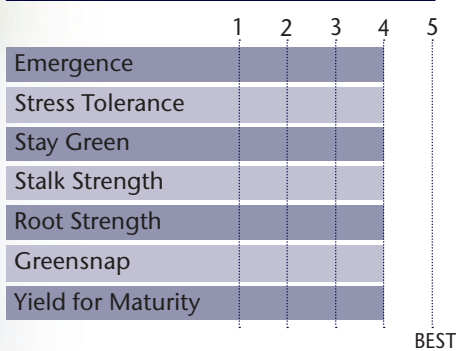


Dominating Top-End Yield Performance



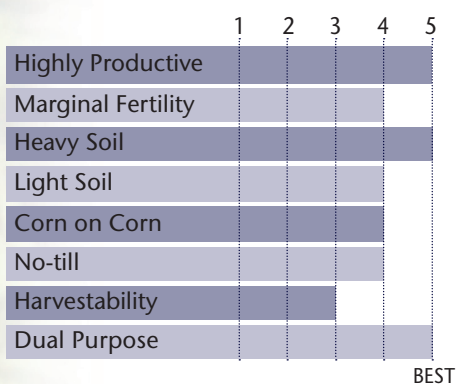
- Handles poorly drained soils as well as any hybrid in the industry
- Consistent ear development down the row
- Excellent dual purpose hybrid for grain or silage
- Responds to high plant populations, even on tough ground

AGRONOMIC CHARACTERISTICS



GDU to Flowering	1310
GDU to Black Layer	2710
Refuge Requirement	5% RIB
Herbicide Tolerance	RR

HYBRID POSITIONING & ADAPTABILITY

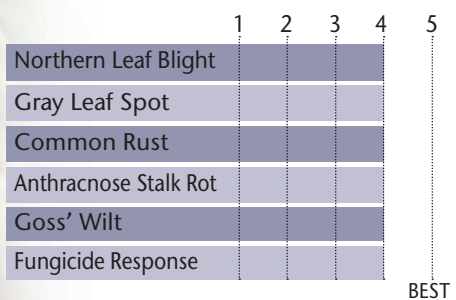


PLANT & EAR CHARACTERISTICS

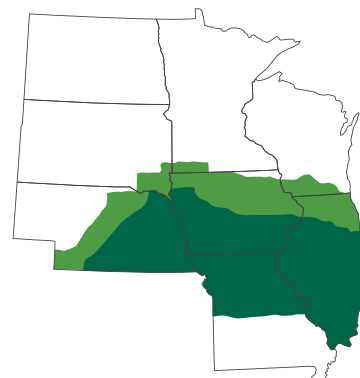
Leaf Angle	Semi-Erect
Plant Height	Medium Tall
Ear Height	Medium High
Ear Type	Semi-Flex
Population	Medium - Medium High
Test Weight	3

Test Weight Rating Scale (1-5)
A higher score indicates a heavier test weight

DISEASE TOLERANCE RATINGS



AREA OF ADAPTATION



5 = Excellent 4 = Very Good 3 = Average 2 = Below Average 1 = Poor
*All ratings presented are from past performance and do not ensure future results