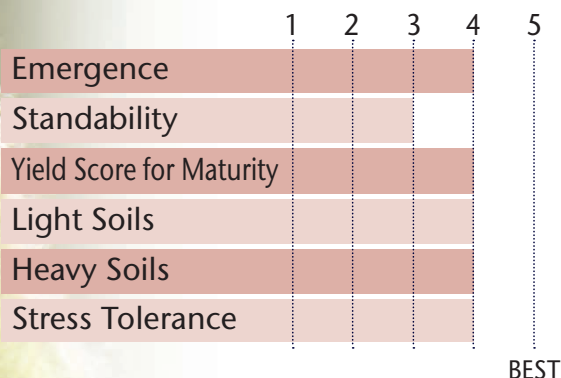


## Consistent Top-End Performance In 2 Years Of Testing



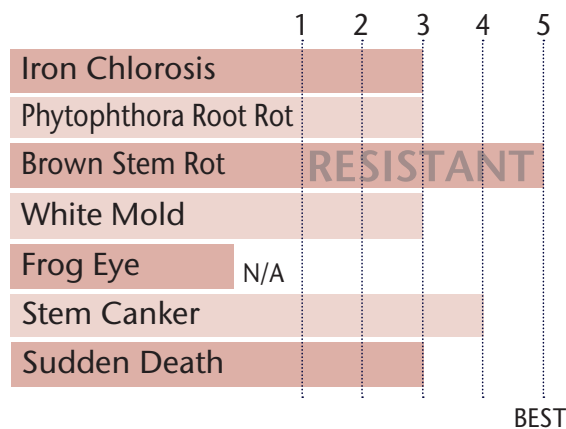
- Good lateral branching for top yields
- Take across all soil types
- Resistant to Brown Stem Rot

### POSITIONING & ADAPTABILITY



5 = Excellent 4 = Very Good 3 = Average 2 = Below Average 1 = Poor  
 \*All ratings presented are from past performance and do not ensure future results

### AGRONOMIC RATINGS



BEST

### PLANT CHARACTERISTICS

Flower Color	Purple
Pubescence Color	Lt Tawny
Pod Color	Brown
Hilum Color	Brown
Plant Height	Medium Tall
Plant Type	Intermediate
Protein Content	N/A
Oil Content	N/A
Estimated Seed Size	2700

Soybean Cyst Nematode (SCN) PI 88.788

Phytophthora Root Rot Gene Ra

5 = Excellent/Resistant 4 = Very Good 3 = Average 2 = Below Average 1 = Poor/Highly Susceptible  
 \*All ratings presented are from past performance and do not ensure future results

#### Phytophthora Root Rot Gene Resistance

Ra = Rps 1a = resistance to races 1-2, 10-13, 15-19

Rc = Rps 1 c = resistance to races 1-3, 6-11, 13, 15, 17, 21, 23, 24

Rk = Rps 1 k = resistance to races 1-11, 13-15, 17-18, 21, 22

R3a = Rps3a = resistance to races 1-5, 8, 9, 11, 13, 14, 16, 18, 23, 25

NG = No specific gene

Ha, Hc, and Hk = Heterozygous for specific gene

### AREA OF ADAPTATION

