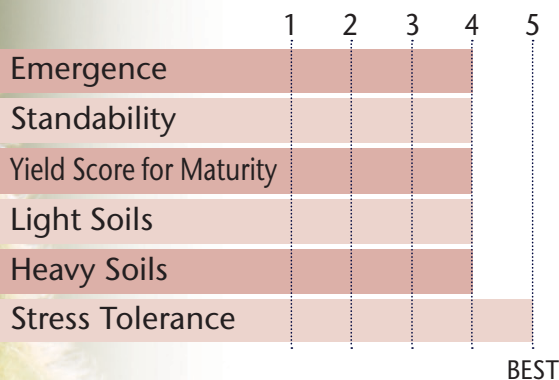


### KEY RELEASE THAT BRINGS YIELD & A GREAT DEFENSIVE PACKAGE



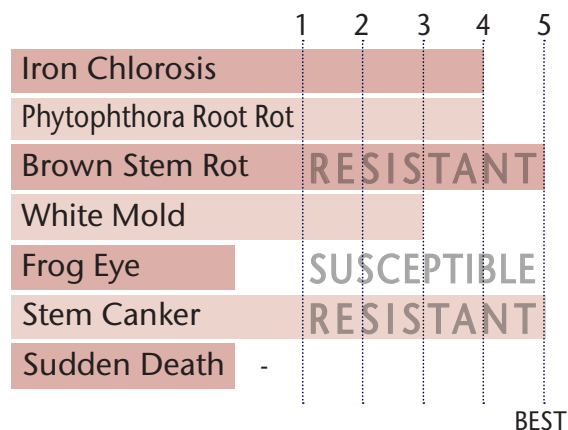
- SCN resistance with PI 88.788
- Brown Stem Rot resistant
- Rps 3a gene & strong IDC score
- Medium plant that handles stress very well throughout the season
- Good choice for the Red River Valley & into South Dakota

#### POSITIONING & ADAPTABILITY



5 = Excellent 4 = Very Good 3 = Average 2 = Below Average 1 = Poor  
 \*All ratings presented are from past performance and do not ensure future results

#### AGRONOMIC RATINGS



#### PLANT CHARACTERISTICS

Flower Color	Purple
Pubescence Color	Gray
Pod Color	Tan
Hilum Color	Buff
Plant Height	Medium
Plant Type	Intermediate-Bush
Estimated Seed Size	2,500

Soybean Cyst Nematode (SCN)	PI 88.788
Phytophthora Root Rot Gene	Rps 3a

5 = Excellent/Resistant 4 = Very Good 3 = Average 2 = Below Average 1 = Poor/Highly Susceptible  
 \*All ratings presented are from past performance and do not ensure future results

#### Phytophthora Root Rot Gene Resistance

Rps 1a = resistance to races 1-2, 10-13, 15-19

Rps 1c = resistance to races 1-3, 6-11, 13, 15, 17, 21, 23, 24

Rps 1k = resistance to races 1-11, 13-15, 17-18, 21, 22

Rps 3a = resistance to races 1-5, 8, 9, 11, 13, 14, 16, 18, 23, 25

NG = No specific gene

Ha, Hc, and Hk = Heterozygous for specific gene