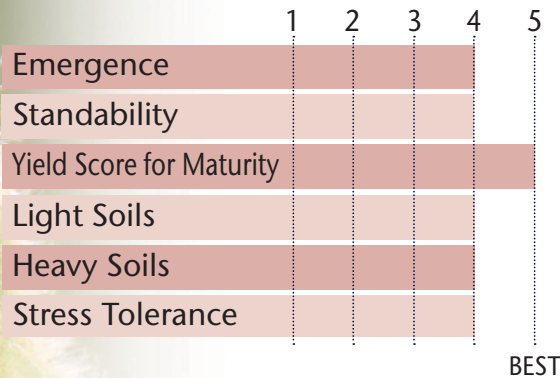


A VERY CONSISTENT HIGH YIELD PERFORMER IN PRE-COMMERCIAL LAUNCH TESTING



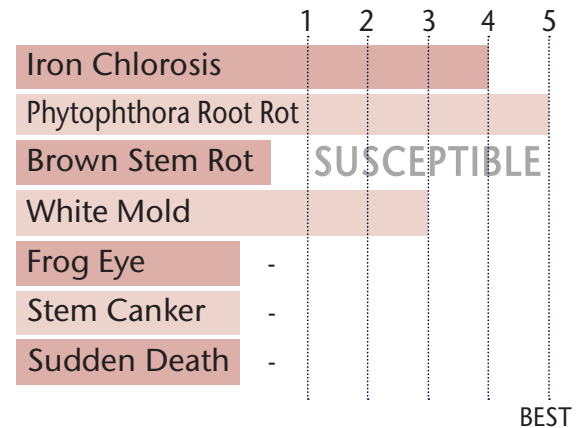
- Medium plant height with uniformity & standability
- Rps 3a gene with excellent Phytophthora field tolerance
- White Mold scoring slightly above average
- Non-SCN
- Pair up with 06E9 for defense & allow 08E9 to bring the yield

POSITIONING & ADAPTABILITY



5 = Excellent 4 = Very Good 3 = Average 2 = Below Average 1 = Poor
 *All ratings presented are from past performance and do not ensure future results

AGRONOMIC RATINGS



PLANT CHARACTERISTICS

Flower Color	Purple
Pubescence Color	Gray
Pod Color	Tan
Hilum Color	Imperfect Black
Plant Height	Medium
Plant Type	Intermediate
Estimated Seed Size	2,600

Soybean Cyst Nematode (SCN)	Susceptible
Phytophthora Root Rot Gene	Rps 3a

5 = Excellent/Resistant 4 = Very Good 3 = Average 2 = Below Average 1 = Poor/Highly Susceptible
 *All ratings presented are from past performance and do not ensure future results

Phytophthora Root Rot Gene Resistance

Rps 1a = resistance to races 1-2, 10-13, 15-19

Rps 1c = resistance to races 1-3, 6-11, 13, 15, 17, 21, 23, 24

Rps 1k = resistance to races 1-11, 13-15, 17-18, 21, 22

Rps 3a = resistance to races 1-5, 8, 9, 11, 13, 14, 16, 18, 23, 25

NG = No specific gene

Ha, Hc, and Hk = Heterozygous for specific gene