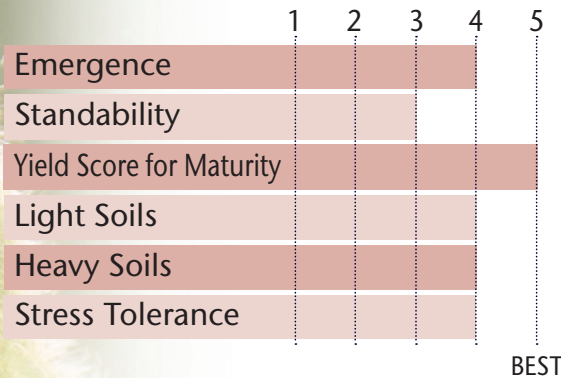


WILL BE KEY LINE FOR EARLY GROUP 1 SOYBEANS



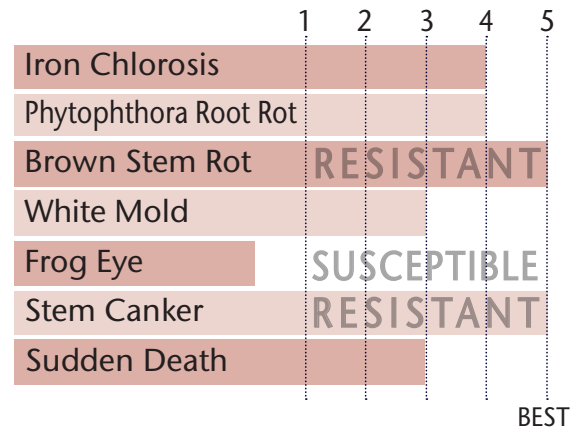
- Medium tall plant that handles stress well
- SCN & Brown Stem Rot resistant
- Rps 1c gene & very good PRR tolerance
- SDS and White Mold scoring right above average
- Pair up with either 11E9 or 15E9 for added IDC support
- 3 bu/ac advantage & 62% win rate over 17E8

POSITIONING & ADAPTABILITY



5 = Excellent 4 = Very Good 3 = Average 2 = Below Average 1 = Poor
 *All ratings presented are from past performance and do not ensure future results

AGRONOMIC RATINGS



BEST

PLANT CHARACTERISTICS

Flower Color	Purple
Pubescence Color	Gray
Pod Color	Tan
Hilum Color	Imperfect Black
Plant Height	Medium Tall
Plant Type	Intermediate-Bush
Estimated Seed Size	2,600

Soybean Cyst Nematode (SCN) PI 88.788

Phytophthora Root Rot Gene Rps 1c

5 = Excellent/Resistant 4 = Very Good 3 = Average 2 = Below Average 1 = Poor/Highly Susceptible
 *All ratings presented are from past performance and do not ensure future results

Phytophthora Root Rot Gene Resistance

Rps 1a = resistance to races 1-2, 10-13, 15-19

Rps 1c = resistance to races 1-3, 6-11, 13, 15, 17, 21, 23, 24

Rps 1k = resistance to races 1-11, 13-15, 17-18, 21, 22

Rps 3a = resistance to races 1-5, 8, 9, 11, 13, 14, 16, 18, 23, 25

NG = No specific gene

Ha, Hc, and Hk = Heterozygous for specific gene