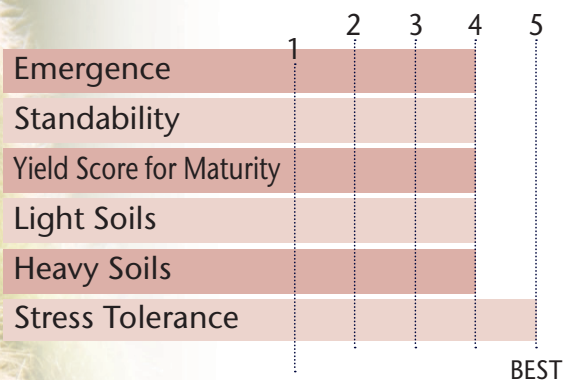


ELITE GENETICS THAT ARE OUT YIELDING LIBERTY LINES BY 2-4 BU/AC



- Big improvement on agronomics & yield performance over TP 16L86
- Nice agronomic package with IDC, BSR, Rps 1c, SWM, & SCN
- Strong IDC soybean that can be taken across environments
- Medium plant height with nice width & standability all season long
- 88% win rate over TP-16L86 in 2018
- Dependable product to go head to head against AG1733 acres

POSITIONING & ADAPTABILITY

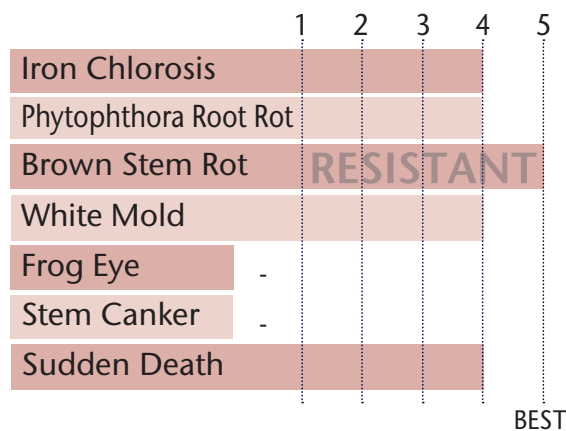


5 = Excellent 4 = Very Good 3 = Average 2 = Below Average 1 = Poor
 *All ratings presented are from past performance and do not ensure future results

PLANT CHARACTERISTICS

| | |
|---------------------|--------------|
| Flower Color | Purple |
| Pubescence Color | Lt Tawny |
| Pod Color | Tan |
| Hilum Color | Black |
| Plant Height | Medium |
| Plant Type | Intermediate |
| Estimated Seed Size | 2,400 |

AGRONOMIC RATINGS



| | |
|-----------------------------|-----------|
| Soybean Cyst Nematode (SCN) | PI 88.788 |
| Phytophthora Root Rot Gene | Rps 1c |

5 = Excellent/Resistant 4 = Very Good 3 = Average 2 = Below Average 1 = Poor/Highly Susceptible
 *All ratings presented are from past performance and do not ensure future results

Phytophthora Root Rot Gene Resistance

Rps 1a = resistance to races 1-2, 10-13, 15-19

Rps 1c = resistance to races 1-3, 6-11, 13, 15, 17, 21, 23, 24

Rps 1k = resistance to races 1-11, 13-15, 17-18, 21, 22

Rps 3a = resistance to races 1-5, 8, 9, 11, 13, 14, 16, 18, 23, 25

NG = No specific gene

Ha, Hc, and Hk = Heterozygous for specific gene

18GL8 | 20GL8 | 21GL8



1.8 RM

2.0 RM

2.1 RM

2018 3rd Party Test Results

18GL8

| HEAD TO HEAD COMPARISON | WINS | LOSSES | TOTAL | BU. AVG. | AVG. BU. ADVANTAGE |
|-------------------------|------|--------|-------|----------|--------------------|
| 18GL8 vs. 16GL8 | 8 | 9 | 17 | 60.5 | +0.2 |
| 18GL8 vs. TP-16L86 | 15 | 2 | 17 | 55 | +5.7 |

2018 3rd Party Test Results

20GL8

| HEAD TO HEAD COMPARISON | WINS | LOSSES | TOTAL | BU. AVG. | AVG. BU. ADVANTAGE |
|-------------------------|------|--------|-------|----------|--------------------|
| 20GL8 vs. 21GL8 | 9 | 10 | 19 | 59.4 | -2.1 |
| 20GL8 vs. TP-21L15 | 14 | 5 | 19 | 55.1 | +2.2 |
| 20GL8 vs. 23GL8 | 12 | 7 | 19 | 54.4 | +2.9 |

2018 3rd Party Test Results

21GL8

| HEAD TO HEAD COMPARISON | WINS | LOSSES | TOTAL | BU. AVG. | AVG. BU. ADVANTAGE |
|-------------------------|------|--------|-------|----------|--------------------|
| 21GL8 vs. 20GL8 | 9 | 8 | 17 | 60.1 | -0.1 |
| 21GL8 vs. TP-23L54 | 11 | 6 | 17 | 54.5 | +5.0 |
| 21GL8 vs. TP-21L15 | 10 | 7 | 17 | 55.5 | +4.0 |

*All data is from 2018 harvest

