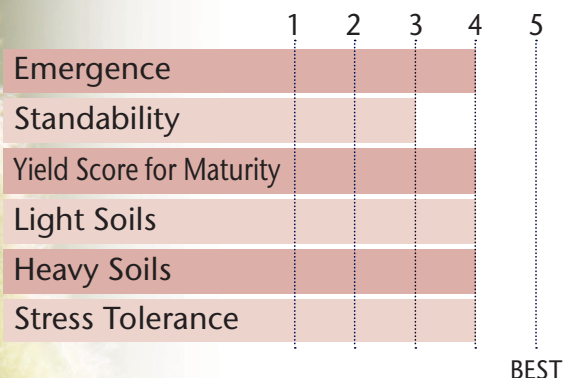


ATTRACTIVE LIGHT TAWNY WITH MODERATE LATERAL BRANCHING



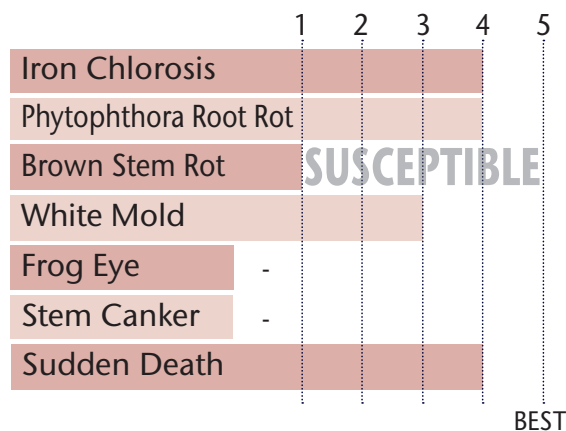
- Defensive package that includes SCN, IDC & PRR field tolerance
- Medium tall height with very good emergence & stress tolerance
- SDS & IDC ratings are very good
- PI 88.788 cyst protection with above average White Mold
- Pair up with 20GL8 for added protection on White Mold & SDS
- Out yielding TP-21L15 by 4 bu/ac

POSITIONING & ADAPTABILITY



5 = Excellent 4 = Very Good 3 = Average 2 = Below Average 1 = Poor
 *All ratings presented are from past performance and do not ensure future results

AGRONOMIC RATINGS



BEST

PLANT CHARACTERISTICS

Flower Color	Purple
Pubescence Color	Lt Tawny
Pod Color	Tan
Hilum Color	Black
Plant Height	Medium Tall
Plant Type	Intermediate
Estimated Seed Size	2,600

Soybean Cyst Nematode (SCN) PI 88.788

Phytophthora Root Rot Gene NG

5 = Excellent/Resistant 4 = Very Good 3 = Average 2 = Below Average 1 = Poor/Highly Susceptible
 *All ratings presented are from past performance and do not ensure future results

Phytophthora Root Rot Gene Resistance

Rps 1a = resistance to races 1-2, 10-13, 15-19

Rps 1c = resistance to races 1-3, 6-11, 13, 15, 17, 21, 23, 24

Rps 1k = resistance to races 1-11, 13-15, 17-18, 21, 22

Rps 3a = resistance to races 1-5, 8, 9, 11, 13, 14, 16, 18, 23, 25

NG = No specific gene

Ha, Hc, and Hk = Heterozygous for specific gene

18GL8 | 20GL8 | 21GL8



1.8 RM

2.0 RM

2.1 RM

2018 3rd Party Test Results

					18GL8
HEAD TO HEAD COMPARISON	WINS	LOSSES	TOTAL	BU. AVG.	AVG. BU. ADVANTAGE
18GL8 vs. 16GL8	8	9	17	60.5	+0.2
18GL8 vs. TP-16L86	15	2	17	55	+5.7

2018 3rd Party Test Results

					20GL8
HEAD TO HEAD COMPARISON	WINS	LOSSES	TOTAL	BU. AVG.	AVG. BU. ADVANTAGE
20GL8 vs. 21GL8	9	10	19	59.4	-2.1
20GL8 vs. TP-21L15	14	5	19	55.1	+2.2
20GL8 vs. 23GL8	12	7	19	54.4	+2.9

2018 3rd Party Test Results

					21GL8
HEAD TO HEAD COMPARISON	WINS	LOSSES	TOTAL	BU. AVG.	AVG. BU. ADVANTAGE
21GL8 vs. 20GL8	9	8	17	60.1	-0.1
21GL8 vs. TP-23L54	11	6	17	54.5	+5.0
21GL8 vs. TP-21L15	10	7	17	55.5	+4.0

*All data is from 2018 harvest