

Titan^{pro}

NEW 23E9

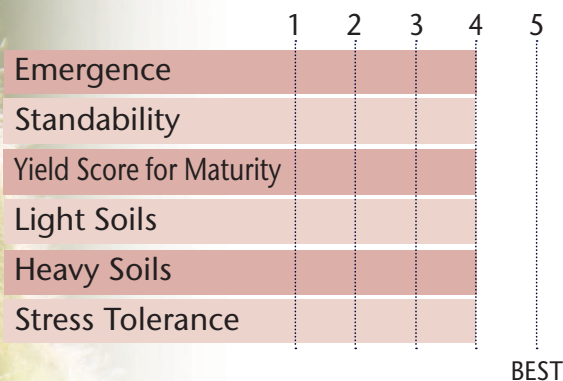
**2.3
RM**

BEAUTIFUL LIGHT TAWNY TAN LINE THAT BRINGS YIELD PERFORMANCE FROM EAST TO WEST



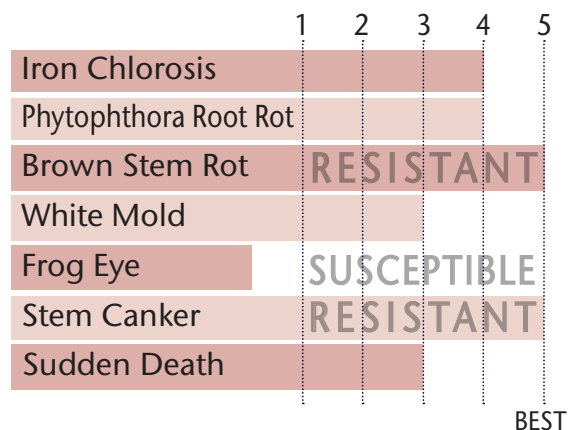
- SCN & BSR resistant
- SDS & White Mold are above average
- No PRR gene but offers great Phytophthora field tolerance
- Shows good northern movement
- Pair up with 22E8 for added protection in White Mold & SDS
- 83% win rate over 17E8

POSITIONING & ADAPTABILITY



5 = Excellent 4 = Very Good 3 = Average 2 = Below Average 1 = Poor
 *All ratings presented are from past performance and do not ensure future results

AGRONOMIC RATINGS



PLANT CHARACTERISTICS

Flower Color	White
Pubescence Color	Lt Tawny
Pod Color	Tan
Hilum Color	Black
Plant Height	Medium
Plant Type	Intermediate
Estimated Seed Size	2,600

Soybean Cyst Nematode (SCN)	PI 88.788
Phytophthora Root Rot Gene	NG

5 = Excellent/Resistant 4 = Very Good 3 = Average 2 = Below Average 1 = Poor/Highly Susceptible
 *All ratings presented are from past performance and do not ensure future results

Phytophthora Root Rot Gene Resistance

Rps 1a = resistance to races 1-2, 10-13, 15-19

Rps 1c = resistance to races 1-3, 6-11, 13, 15, 17, 21, 23, 24

Rps 1k = resistance to races 1-11, 13-15, 17-18, 21, 22

Rps 3a = resistance to races 1-5, 8, 9, 11, 13, 14, 16, 18, 23, 25

NG = No specific gene

Ha, Hc, and Hk = Heterozygous for specific gene