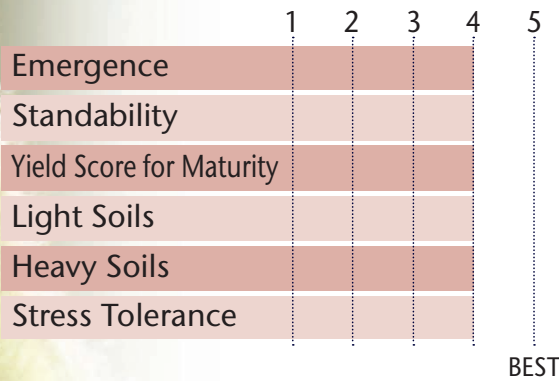


NEW RELEASE WITH BIG IMPROVEMENTS IN YIELD & AGRONOMICS AT 2.3-2.4 RM



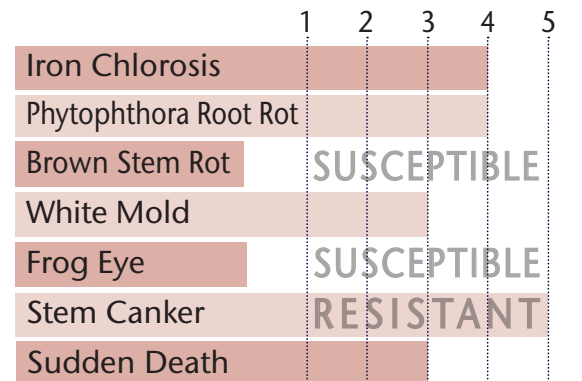
- Improved SDS, PRR, IDC, & White Mold over last year's 23GL8
- SDS & White Mold are above average
- Very good PRR field tolerance
- Stem Canker resistant
- Excellent performance in South Dakota & across Iowa
- Pair up with 21GL8 for added protection against SDS

POSITIONING & ADAPTABILITY



5 = Excellent 4 = Very Good 3 = Average 2 = Below Average 1 = Poor
 *All ratings presented are from past performance and do not ensure future results

AGRONOMIC RATINGS



BEST

PLANT CHARACTERISTICS

| | |
|---------------------|--------------|
| Flower Color | Purple |
| Pubescence Color | Lt Tawny |
| Pod Color | Tan |
| Hilum Color | Black |
| Plant Height | Medium Tall |
| Plant Type | Intermediate |
| Estimated Seed Size | 2,500 |

Soybean Cyst Nematode (SCN) PI 88.788

Phytophthora Root Rot Gene Rps 1k

5 = Excellent/Resistant 4 = Very Good 3 = Average 2 = Below Average 1 = Poor/Highly Susceptible
 *All ratings presented are from past performance and do not ensure future results

Phytophthora Root Rot Gene Resistance

Rps 1a = resistance to races 1-2, 10-13, 15-19

Rps 1c = resistance to races 1-3, 6-11, 13, 15, 17, 21, 23, 24

Rps 1k = resistance to races 1-11, 13-15, 17-18, 21, 22

Rps 3a = resistance to races 1-5, 8, 9, 11, 13, 14, 16, 18, 23, 25

NG = No specific gene

Ha, Hc, and Hk = Heterozygous for specific gene