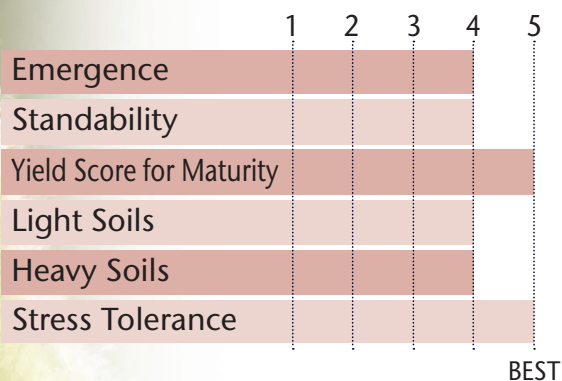


HIGH YIELDING GROUP 3 LINE WITH ADAPTABILITY ACROSS ENVIRONMENTS



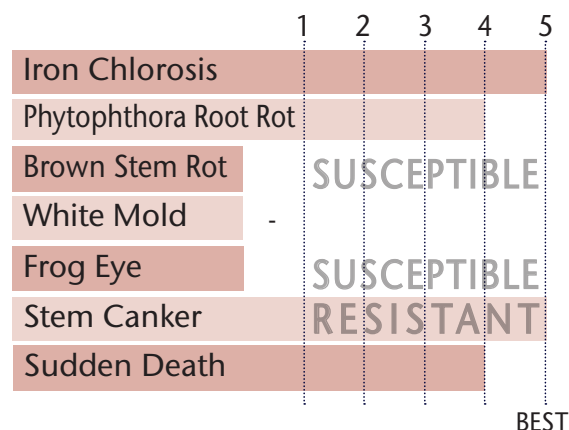
- SDS tolerance is very good
- No PRR gene but field tolerance is very good
- SCN line with excellent IDC protection
- Topped the charts in pre-commercial testing across 3.0-3.3 RM
- Key line that needs to be on the farm
- 83% win rate over 32GL8 & 100% over 30GL8

POSITIONING & ADAPTABILITY



5 = Excellent 4 = Very Good 3 = Average 2 = Below Average 1 = Poor
*All ratings presented are from past performance and do not ensure future results

AGRONOMIC RATINGS



PLANT CHARACTERISTICS

Flower Color	Purple
Pubescence Color	Lt Tawny
Pod Color	Tan
Hilum Color	Black
Plant Height	Medium Tall
Plant Type	Intermediate
Estimated Seed Size	2,700

Soybean Cyst Nematode (SCN)	PI 88.788
Phytophthora Root Rot Gene	NG

5 = Excellent/Resistant 4 = Very Good 3 = Average 2 = Below Average 1 = Poor/Highly Susceptible
*All ratings presented are from past performance and do not ensure future results

Phytophthora Root Rot Gene Resistance

Rps 1a = resistance to races 1-2, 10-13, 15-19

Rps 1c = resistance to races 1-3, 6-11, 13, 15, 17, 21, 23, 24

Rps 1k = resistance to races 1-11, 13-15, 17-18, 21, 22

Rps 3a = resistance to races 1-5, 8, 9, 11, 13, 14, 16, 18, 23, 25

NG = No specific gene

Ha, Hc, and Hk = Heterozygous for specific gene