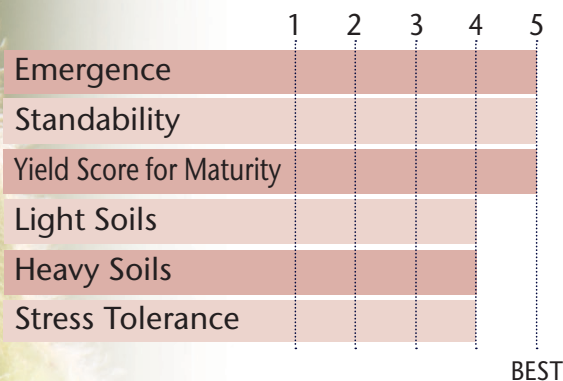


NEW KEY RELEASE THAT BRINGS GREAT PLANT HEIGHT & EXCELLENT LODGING RATINGS



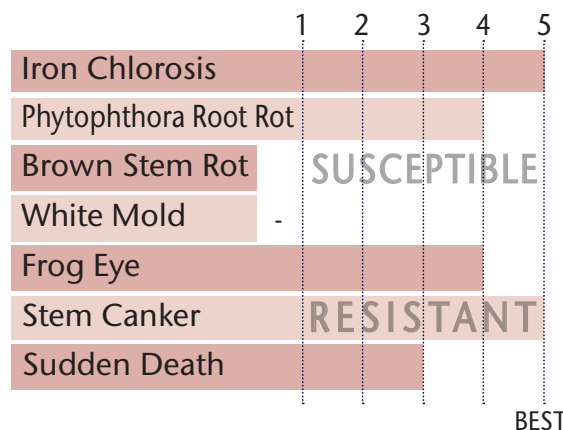
- SCN & Stem Canker resistant
- Rps 1k with excellent PRR field tolerance
- Exceptional Frogeye & IDC ratings
- Above average SDS score
- Pair up with 34E8 & beat every LibertyLink line on the farm
- 62% win rate over 34E8

POSITIONING & ADAPTABILITY



5 = Excellent 4 = Very Good 3 = Average 2 = Below Average 1 = Poor
 *All ratings presented are from past performance and do not ensure future results

AGRONOMIC RATINGS



PLANT CHARACTERISTICS

Flower Color	White
Pubescence Color	Gray
Pod Color	Brown
Hilum Color	Buff
Plant Height	Medium Tall
Plant Type	Intermediate-Bush
Estimated Seed Size	2,600

Soybean Cyst Nematode (SCN)	PI 88.788
Phytophthora Root Rot Gene	Rps 1k

5 = Excellent/Resistant 4 = Very Good 3 = Average 2 = Below Average 1 = Poor/Highly Susceptible
 *All ratings presented are from past performance and do not ensure future results

Phytophthora Root Rot Gene Resistance

Rps 1a = resistance to races 1-2, 10-13, 15-19

Rps 1c = resistance to races 1-3, 6-11, 13, 15, 17, 21, 23, 24

Rps 1k = resistance to races 1-11, 13-15, 17-18, 21, 22

Rps 3a = resistance to races 1-5, 8, 9, 11, 13, 14, 16, 18, 23, 25

NG = No specific gene

Ha, Hc, and Hk = Heterozygous for specific gene