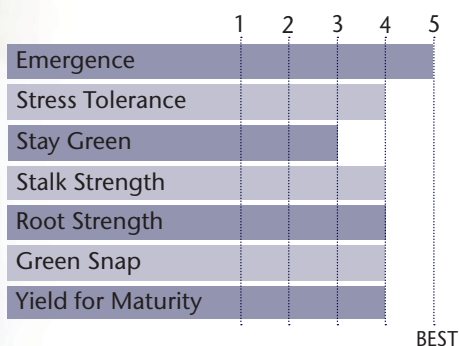


### EXCELLENT HYBRID FOR EARLY PLANTING AND REDUCED TILLAGE

- Strong emergence & early plant vigor
- Wide adaptability across all environments
- Healthy plant with consistent girthy semi-flex ears
- Handles the tougher acre with very good drought tolerance
- Very good stalks & roots for late harvestability

#### AGRONOMIC CHARACTERISTICS



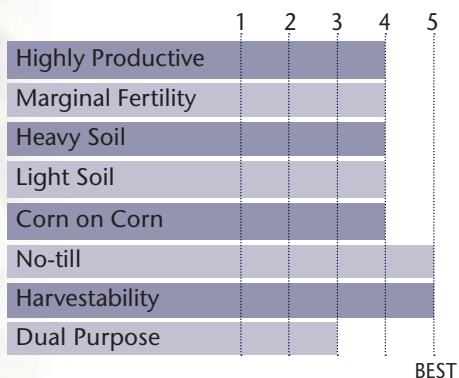
GDU to Flowering	1205
GDU to Black Layer	2275
Refuge Requirement	5% RIB
Herbicide Tolerance	RR

#### PLANT & EAR CHARACTERISTICS

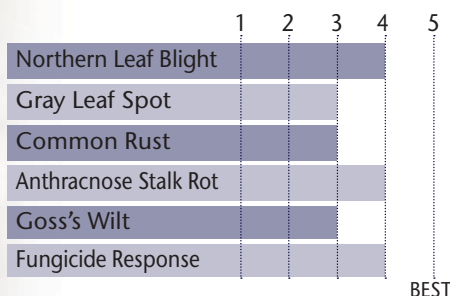
Leaf Angle	Semi-Erect
Plant Height	Medium
Ear Height	Medium
Ear Type	Semi-Flex
Population	Medium - Medium High
Test Weight	3

Test Weight Rating Scale (1-5)  
A higher score indicates a heavier test weight

#### HYBRID POSITIONING & ADAPTABILITY

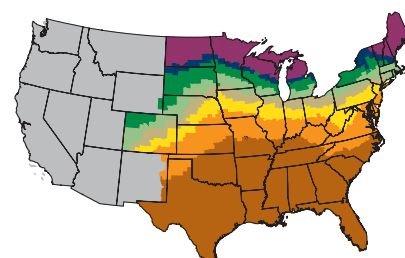


#### DISEASE TOLERANCE RATINGS



5 = Excellent 4 = Very Good 3 = Average 2 = Below Average 1 = Poor  
\*All ratings presented are from past performance and do not ensure future results

#### MATURITY ZONE MAP



- Zone 1 – 85 and earlier
- Zone 2 – 90
- Zone 3 – 95
- Zone 4 – 100
- Zone 5 – 105
- Zone 6 – 110
- Zone 7 – 115
- Zone 8 – 120 and later

82-90 2P

90 RM



**PACKAGE WITH: 83-87 2P  
86-91  
90-94 2P  
91-95**

STATE	CITY	TRIAL	YIELD	RANK*	ENTRIES
IA	Grafton	PRO 82	221.6	<b>4</b>	25
MN	Rothsay	U of M	258	<b>1</b>	16
MN	Morris	PRO 81	248.1	<b>1</b>	15
MN	St. Cloud	PRO 82	239.7	<b>5</b>	25
MN	Brooten	PRO 81	202.7	<b>5</b>	15
MN	Hayfield	PRO 82	173.4	<b>5</b>	25
MN	Staples	U of M	249	<b>7</b>	16
MN	Madison	PRO 81	216	<b>8</b>	15
MN	Olivia	PRO 81	214.9	<b>9</b>	15
MN	Plato	PRO 81	181.5	<b>9</b>	15
MN	Pipestone	PRO 82	203.5	<b>11</b>	25
MN	Madison	PRO 82	231	<b>12</b>	25
MN	St. Cloud	PRO 81	196.4	<b>13</b>	15
MN	Pipestone	PRO 81	160	<b>13</b>	15
MN	Brooten	PRO 82	297.7	<b>14</b>	25
ND	Casselton	PRO 81	248.1	<b>1</b>	15
ND	Buffalo	PRO 81	204.6	<b>2</b>	15
ND	Buffalo	PRO 82	206.4	<b>12</b>	25

\*All data is from 2018 harvest

\*Rank is determined by yield

\*No product recommendation by F.I.R.S.T. or other 3rd parties is implied

\*Always read and follow bag tags, and understand herbicide tolerance information

