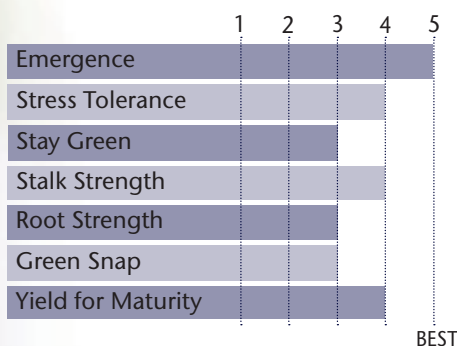


### LEAD HYBRID WITH EXCELLENT EARLY SEED VIGOR

- Early flowering hybrid with good southern movement
- Strong performance across environments
- Great option for tough acres
- Dual purpose hybrid for silage and grain
- Outperformed P8542AM by 4.6 bu/ac at 109 locations in 2017-2018
- Outperformed DKC35-88 by 12.0 bu/ac across 70 locations in 2018

#### AGRONOMIC CHARACTERISTICS



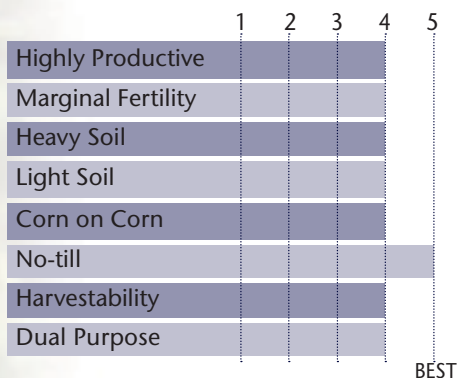
GDU to Flowering	1190
GDU to Black Layer	2260
Refuge Requirement	5% RIB
Herbicide Tolerance	RR

#### PLANT & EAR CHARACTERISTICS

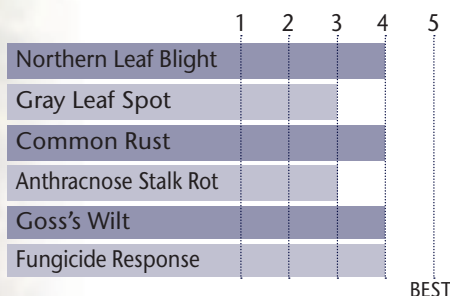
Leaf Angle	Semi-Erect
Plant Height	Medium Tall
Ear Height	Medium High
Ear Type	Semi-Flex
Population	Medium - Medium High
Test Weight	3

Test Weight Rating Scale (1-5)  
A higher score indicates a heavier test weight

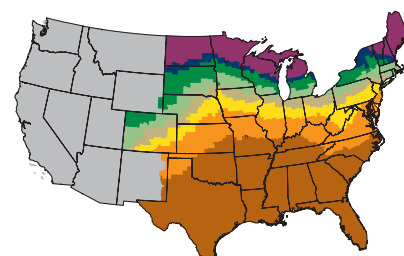
#### HYBRID POSITIONING & ADAPTABILITY



#### DISEASE TOLERANCE RATINGS



#### MATURITY ZONE MAP



- Zone 1 – 85 and earlier
- Zone 2 – 90
- Zone 3 – 95
- Zone 4 – 100
- Zone 5 – 105
- Zone 6 – 110
- Zone 7 – 115
- Zone 8 – 120 and later

5 = Excellent 4 = Very Good 3 = Average 2 = Below Average 1 = Poor  
\*All ratings presented are from past performance and do not ensure future results



**PACKAGE WITH: 86-91  
82-90 2P  
TP 48-93 2P**

STATE	CITY	TRIAL	YIELD	RANK*	ENTRIES
MN	Rothsay	U of M	242	<b>1</b>	12
MN	Staples	U of M	252	<b>3</b>	12
MN	St. Cloud	PRO 81	238.7	<b>3</b>	15
MN	Pipestone	PRO 81	191.6	<b>3</b>	15
MN	Madison	PRO 81	224.4	<b>5</b>	15
MN	Foley	FIRST	232	<b>6</b>	36
MN	Albany	FIRST	216.6	<b>8</b>	36
MN	Brandon	FIRST	213	<b>9</b>	36
MN	Morris	PRO 81	219	<b>10</b>	15
MN	Foxhome	FIRST	202.4	<b>11</b>	40
MN	Brooten	PRO 81	189.8	<b>12</b>	15
MN	Olivia	PRO 81	182.7	<b>14</b>	15
MN	Plato	PRO 81	132.3	<b>15</b>	15
ND	Buffalo	PRO 81	182.5	<b>8</b>	15
ND	Casselton	PRO 81	203.5	<b>11</b>	15

\*All data is from 2018 harvest

\*Rank is determined by yield

\*No product recommendation by F.I.R.S.T. or other 3rd parties is implied

\*Always read and follow bag tags, and understand herbicide tolerance information