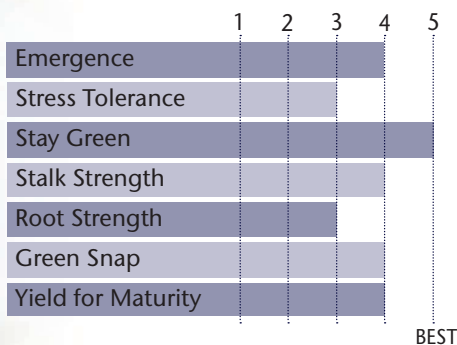


## ELITE CONVENTIONAL & UNIQUE GENETICS AT THE 100 RM

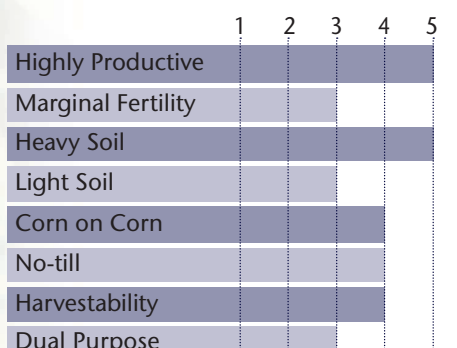
- High yielding conventional hybrid that topped the charts in the 2018 Pro 83 Summary Trial
- A strong & robust plant type that has great agronomics
- Outperformed P0157 by 6.0 bu/ac at 39 locations in 2017-2018
- Outperformed DKC46-36 by 12.5 bu/ac at 20 locations in 2017-2018
- Outperformed DKC51-38 by 4.5 bu/ac at 32 locations in 2017-2018
- Outperformed P9608 by 8.8 bu/ac across 9 locations in 2018

### AGRONOMIC CHARACTERISTICS



GDU to Flowering	1300
GDU to Black Layer	2410
Refuge Requirement	None
Herbicide Tolerance	None

### HYBRID POSITIONING & ADAPTABILITY

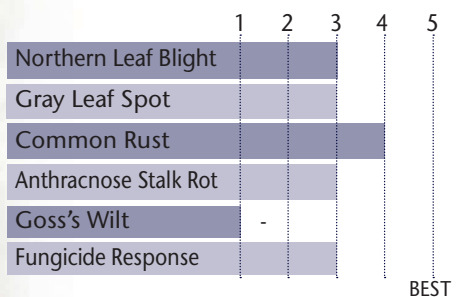


### PLANT & EAR CHARACTERISTICS

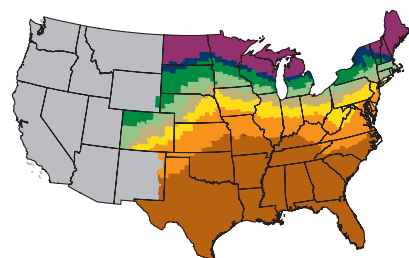
Leaf Angle	Semi-Erect
Plant Height	Medium Tall
Ear Height	Medium High
Ear Type	Determinate
Population	Medium High
Test Weight	4

Test Weight Rating Scale (1-5)  
A higher score indicates a heavier test weight

### DISEASE TOLERANCE RATINGS



### MATURITY ZONE MAP



- Zone 1 – 85 and earlier
- Zone 2 – 90
- Zone 3 – 95
- Zone 4 – 100
- Zone 5 – 105
- Zone 6 – 110
- Zone 7 – 115
- Zone 8 – 120 and later

5 = Excellent 4 = Very Good 3 = Average 2 = Below Average 1 = Poor  
\*All ratings presented are from past performance and do not ensure future results


**Titan<sup>pro</sup>**  
 Conventional

**PACKAGE WITH:** TP 85-96  
 TP 70-98  
 TP 84-01  
 TP 40-03

STATE	CITY	TRIAL	YIELD	RANK*	ENTRIES
IA	Nashua	PRO 83	199.2	<b>2</b>	25
IA	Sheldon	PRO 83	201.2	<b>2</b>	25
IA	Pocahontas	PRO 83	247.8	<b>3</b>	25
IA	Maynard	PRO 83	206.8	<b>6</b>	25
IA	Bode	PRO 83	207.5	<b>7</b>	25
IA	Lake View	PRO 83	240.9	<b>9</b>	25
MN	Albert Lea	PRO 83	190.2	<b>1</b>	25
MN	Wells	PRO 83	219.5	<b>3</b>	25
MN	Sanborn	PRO 83	219.5	<b>4</b>	25
MN	Sleepy Eye	PRO 83	226.5	<b>9</b>	25
SD	Canton	PRO 83	247.7	<b>6</b>	25
SD	Aberdeen	PRO 83	227.2	<b>10</b>	25

\*All data is from 2018 harvest

\*Rank is determined by yield

\*No product recommendation by F.I.R.S.T. or other 3rd parties is implied

\*Always read and follow bag tags, and understand herbicide tolerance information


**Titan<sup>pro</sup>**