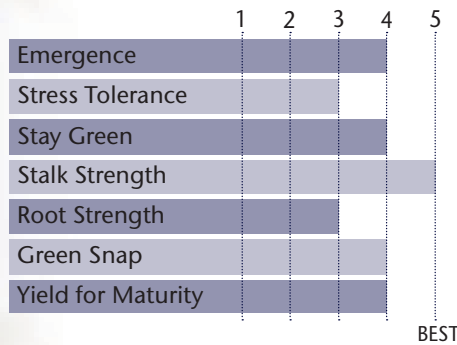


ELITE CONVENTIONAL & UNIQUE GENETICS AT 102 RM



- Nice medium tall plant that has excellent stalks, late season intactness and stay green
- Perfect high pop and narrow row hybrid option
- Has shown to be excellent choice for corn on corn
- Outperformed P0157AM by 5.2 bu/ac across 18 locations in 2017-2018
- Outperformed P0589AM by 1.6 bu/ac at 51 locations in 2018
- Outperformed TP 40-03 by 2.7 bu/ac across 150 locations in 2017-2018

AGRONOMIC CHARACTERISTICS



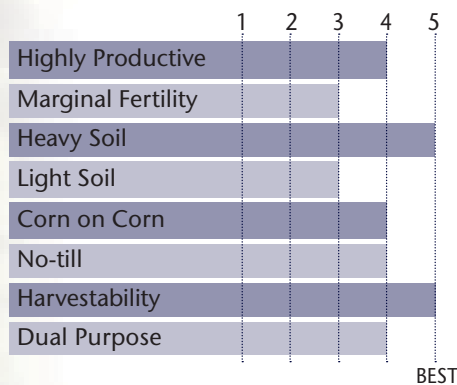
| | |
|---------------------|------|
| GDU to Flowering | 1285 |
| GDU to Black Layer | 2480 |
| Refuge Requirement | None |
| Herbicide Tolerance | None |

PLANT & EAR CHARACTERISTICS

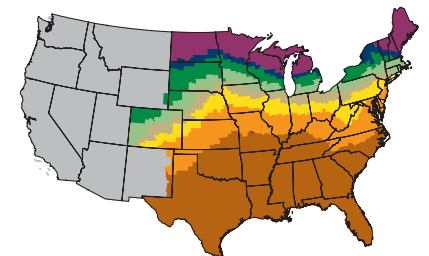
| | |
|--------------|-------------|
| Leaf Angle | Semi-Erect |
| Plant Height | Medium Tall |
| Ear Height | Medium |
| Ear Type | Determinate |
| Population | Medium High |
| Test Weight | 4 |

Test Weight Rating Scale (1-5)
A higher score indicates a heavier test weight

HYBRID POSITIONING & ADAPTABILITY

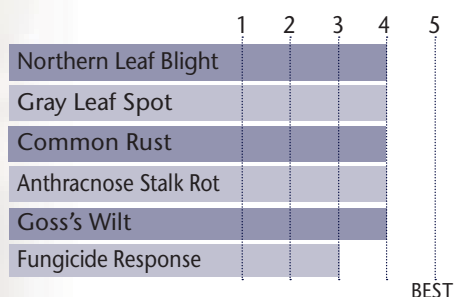


MATURITY ZONE MAP



- Zone 1 – 85 and earlier
- Zone 2 – 90
- Zone 3 – 95
- Zone 4 – 100
- Zone 5 – 105
- Zone 6 – 110
- Zone 7 – 115
- Zone 8 – 120 and later

DISEASE TOLERANCE RATINGS



5 = Excellent 4 = Very Good 3 = Average 2 = Below Average 1 = Poor
*All ratings presented are from past performance and do not ensure future results