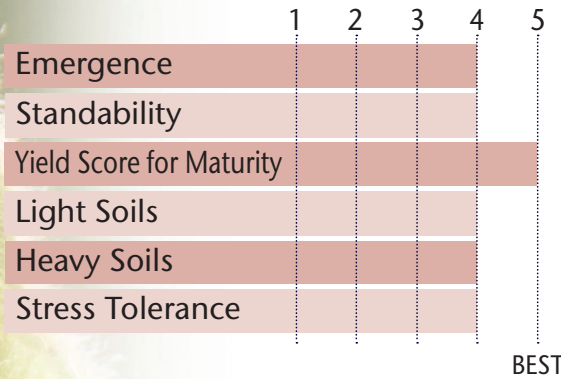


## TOP CHOICE FOR IDC ACRES IN MATURITY GROUP



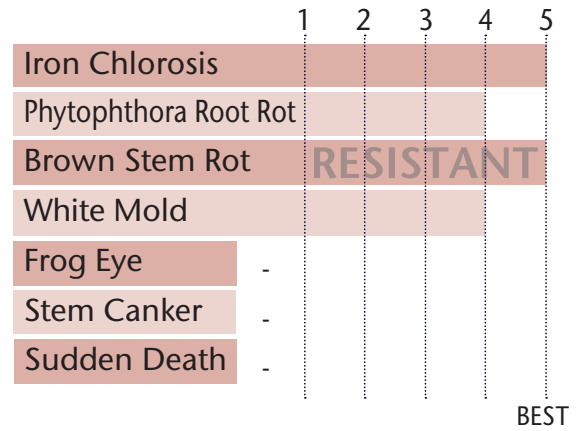
- Excellent emergence & vigor for planting in cold soils
- Very good stress tolerance for broad adaptability
- Rps 1c gene for PRR protection
- PI 88.788 cyst protection
- BSR resistant and best IDC in its class
- Top performer for yield year after year in its RM

### POSITIONING & ADAPTABILITY



5 = Excellent 4 = Very Good 3 = Average 2 = Below Average 1 = Poor  
 \*All ratings presented are from past performance and do not ensure future results

### AGRONOMIC RATINGS



### PLANT CHARACTERISTICS

Flower Color	Purple
Pubescence Color	Gray
Pod Color	Brown
Hilum Color	Imperfect Black
Plant Height	Medium
Plant Type	Intermediate
Estimated Seed Size	2,500

Soybean Cyst Nematode (SCN)

PI 88.788

Phytophthora Root Rot Gene

Rps 1c

5 = Excellent/Resistant 4 = Very Good 3 = Average 2 = Below Average 1 = Poor/Highly Susceptible  
 \*All ratings presented are from past performance and do not ensure future results

#### Phytophthora Root Rot Gene Resistance

Rps 1a = resistance to races 1-2, 10-13, 15-19

Rps 1c = resistance to races 1-3, 6-11, 13, 15, 17, 21, 23, 24

Rps 1k = resistance to races 1-11, 13-15, 17-18, 21, 22

Rps 3a = resistance to races 1-5, 8, 9, 11, 13, 14, 16, 18, 23, 25

NG = No specific gene

Ha, Hc, and Hk = Heterozygous for specific gene



STATE	CITY	TRIAL	YIELD	RANK*	ENTRIES
MN	Georgetown	FIRST	49.3	<b>13</b>	60
ND	East Grand Forks	FIRST	51.2	<b>1</b>	60
ND	Summary	FIRST	50.3	<b>5</b>	60
ND	Hope	FIRST	50.4	<b>17</b>	60

\*All data is from 2018 harvest

\*Rank is determined by yield

\*No product recommendation by F.I.R.S.T. or other 3rd parties is implied

\*Always read and follow bag tags, and understand herbicide tolerance information