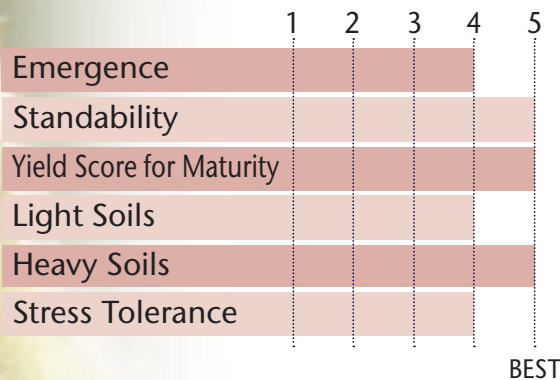


A LATER & SLIGHTLY IMPROVED SISTER LINE TO TP-18X97



- Excellent tolerance to SWM
- Excellent standability
- Brown Stem Rot resistant
- Rps 1a + 3a genes for PRR protection
- 59% win rate over AG2035
- 64% win rate over P19A14X

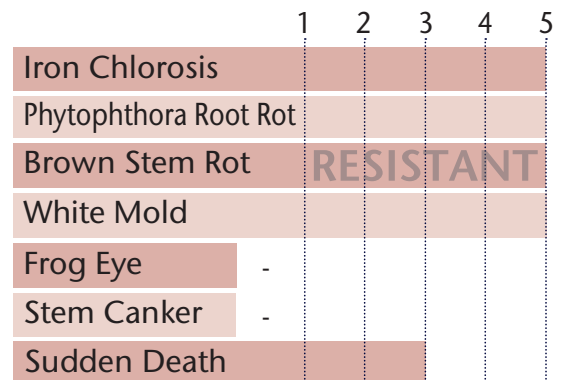
POSITIONING & ADAPTABILITY



BEST

5 = Excellent 4 = Very Good 3 = Average 2 = Below Average 1 = Poor
*All ratings presented are from past performance and do not ensure future results

AGRONOMIC RATINGS



BEST

PLANT CHARACTERISTICS

Flower Color	Purple
Pubescence Color	Gray
Pod Color	Brown
Hilum Color	Buff
Plant Height	Medium Tall
Plant Type	Thin-Intermediate
Estimated Seed Size	2,450

Soybean Cyst Nematode (SCN)	PI 88.788
Phytophthora Root Rot Gene	Rps 1a + 3a

5 = Excellent/Resistant 4 = Very Good 3 = Average 2 = Below Average 1 = Poor/Highly Susceptible
*All ratings presented are from past performance and do not ensure future results

Phytophthora Root Rot Gene Resistance

Rps 1a = resistance to races 1-2, 10-13, 15-19

Rps 1c = resistance to races 1-3, 6-11, 13, 15, 17, 21, 23, 24

Rps 1k = resistance to races 1-11, 13-15, 17-18, 21, 22

Rps 3a = resistance to races 1-5, 8, 9, 11, 13, 14, 16, 18, 23, 25

NG = No specific gene

Ha, Hc, and Hk = Heterozygous for specific gene



STATE	CITY	TRIAL	YIELD	RANK*	ENTRIES
IA	Nashua	ISU	65.53	3	39
IA	Kensett	ISU	52.82	4	39
MN	New Richland	FIRST	70.2	2	48
MN	Kasson	FIRST	66.2	2	48
MN	Madison Lake	FIRST	65.7	8	42
MN	Summary	FIRST	63	9	48
MN	Summary	FIRST	67.4	11	42

2018 3rd Party Test Results

HEAD TO HEAD COMPARISON	WINS	LOSSES	TOTAL	BU. AVG.	TP-20X98
					AVG. BU. ADVANTAGE
TP-20X98 vs. TP-18X97	24	15	39	59.1	+1.3
TP-20X98 vs. TP-20X57	17	22	39	60.8	-0.4

2017 3rd Party Test Results

HEAD TO HEAD COMPARISON	WINS	LOSSES	TOTAL	BU. AVG.	TP-20X98
					AVG. BU. ADVANTAGE
TP-20X98 vs. TP-18X97	13	4	17	55.1	+3.1
TP-20X98 vs. TP-19X06	15	2	17	52.6	+5.6
TP-20X98 vs. TP-20X57	12	5	17	54.9	+3.3
TP-20X98 vs. TP-20R25	10	7	17	57	+1.2

*All data is from 2018 harvest

*Rank is determined by yield

*No product recommendation by F.I.R.S.T. or other 3rd parties is implied

*Always read and follow bag tags, and understand herbicide tolerance information