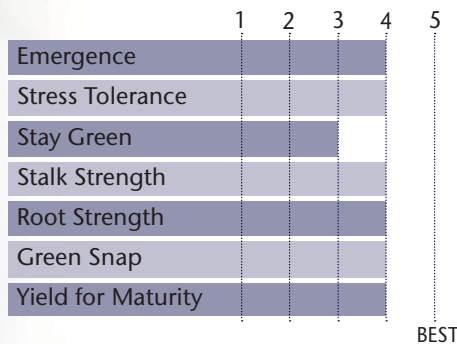


SOLID COMPANION WITH HIGH YIELD POTENTIAL



- Widely adapted across various environments & can handle stress very well
- Very good early season emergence and vigor. Perfect replant hybrid
- Great dual purpose hybrid for silage & grain
- Responds well to wide range of populations & fungicide application
- Outperformed P9188AM by 8.0 bu/ac at 144 locations in 2018
- Outperformed DKC45-66 by 1.9 bu/ac across 138 locations in 2017-2018
- Also available as 86-91

AGRONOMIC CHARACTERISTICS



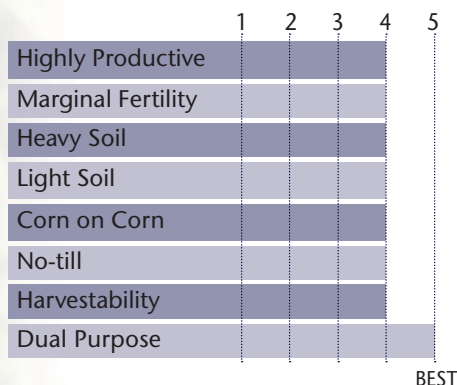
GDU to Flowering	1240
GDU to Black Layer	2310
Refuge Requirement	5% RIB
Herbicide Tolerance	RR

PLANT & EAR CHARACTERISTICS

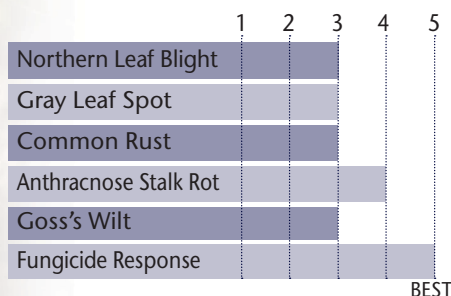
Leaf Angle	Semi-Erect
Plant Height	Medium Tall
Ear Height	Medium High
Ear Type	Semi-Flex
Population	Medium - High
Test Weight	3

Test Weight Rating Scale (1-5)
A higher score indicates a heavier test weight

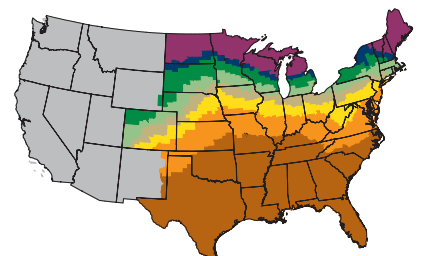
HYBRID POSITIONING & ADAPTABILITY



DISEASE TOLERANCE RATINGS



MATURITY ZONE MAP



- Zone 1 – 85 and earlier
- Zone 2 – 90
- Zone 3 – 95
- Zone 4 – 100
- Zone 5 – 105
- Zone 6 – 110
- Zone 7 – 115
- Zone 8 – 120 and later

5 = Excellent 4 = Very Good 3 = Average 2 = Below Average 1 = Poor

*All ratings presented are from past performance and do not ensure future results

VERSION 62419