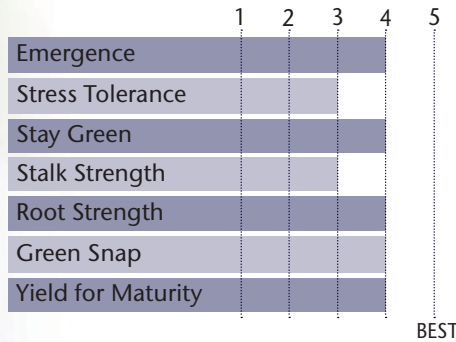


A PROVEN HIGH YIELDING HYBRID YEAR AFTER YEAR



- Big yield potential with fast dry down
- Keep in zone as full season hybrid for big success
- Very good green snap allows it to move west in zone
- Better performance at higher populations
- Great option for narrow rows

AGRONOMIC CHARACTERISTICS



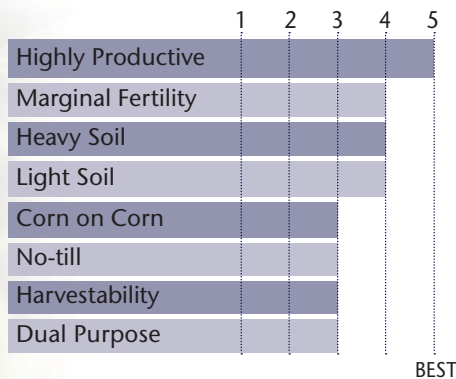
GDU to Flowering	1300
GDU to Black Layer	2580
Refuge Requirement	5% RIB
Herbicide Tolerance	RR

PLANT & EAR CHARACTERISTICS

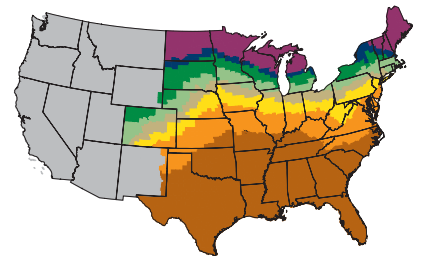
Leaf Angle	Erect
Plant Height	Medium
Ear Height	Medium
Ear Type	Semi-Flex
Population	Medium - Medium High
Test Weight	3

Test Weight Rating Scale (1-5)
A higher score indicates a heavier test weight

HYBRID POSITIONING & ADAPTABILITY

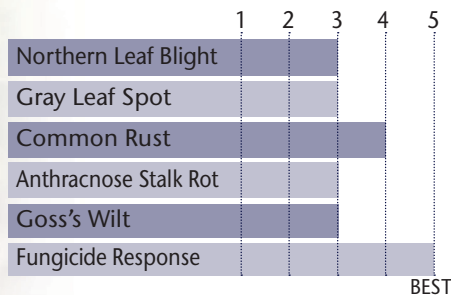


MATURITY ZONE MAP



- Zone 1 – 85 and earlier
- Zone 2 – 90
- Zone 3 – 95
- Zone 4 – 100
- Zone 5 – 105
- Zone 6 – 110
- Zone 7 – 115
- Zone 8 – 120 and later

DISEASE TOLERANCE RATINGS



5 = Excellent 4 = Very Good 3 = Average 2 = Below Average 1 = Poor
*All ratings presented are from past performance and do not ensure future results



**PACKAGE WITH: 92-99 2P
TP 65-00 DG2P
84-03 2P
96-06 2P**

STATE	CITY	TRIAL	YIELD	RANK*	ENTRIES
IA	Nashua	ISU	208.53	3	44
IA	Nashua	PRO 83	198.4	3	25
IA	Sheldon	PRO 83	197.2	3	25
IA	Lake View	PRO 83	249.9	5	25
IA	Sheldon	ISU	202.72	5	44
IA	Reinbeck	PRO 83	213.7	8	25
IA	Maynard	PRO 83	204.3	8	25
IA	Pocahontas	PRO 83	230.2	9	25
IA	Bode	PRO 83	201.5	10	25
IA	Oelwein	ISU	201.72	12	44
IA	Cedar Rapids	PRO 83	169.4	14	25
MN	Albert Lea	PRO 83	177.5	4	25
MN	Sanborn	PRO 83	201.8	14	25
MN	Sleepy Eye	PRO 83	215.3	15	25
SD	Canton	PRO 83	256.1	2	25
SD	Aberdeen	PRO 83	230.6	9	25

Refer to 2019 Seed Guide for additional TP 53-03 2P performance highlights

*All data is from 2018 harvest

*Rank is determined by yield

*No product recommendation by F.I.R.S.T. or other 3rd parties is implied

*Always read and follow bag tags, and understand herbicide tolerance information

