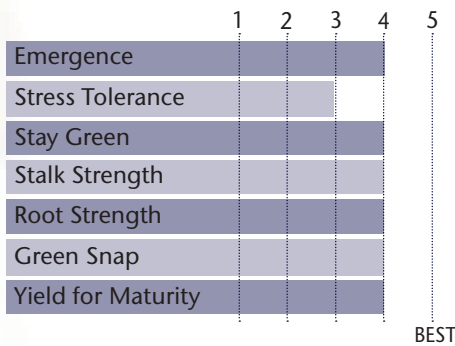


## EXCELLENT YIELD POTENTIAL



- Widely adapted hybrid east to west
- Manage harvest in high population or thin soils
- Excels as a full season hybrid

### AGRONOMIC CHARACTERISTICS



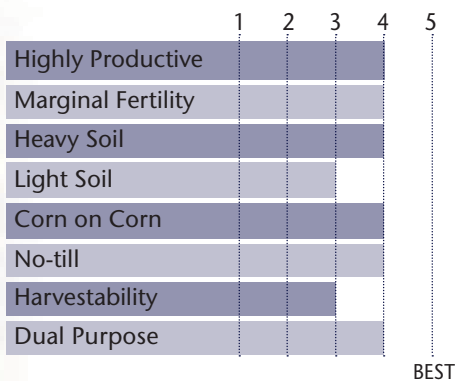
GDU to Flowering	1240
GDU to Black Layer	2390
Refuge Requirement	5% RIB
Herbicide Tolerance	RR

### PLANT & EAR CHARACTERISTICS

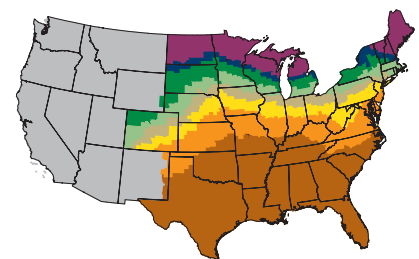
Leaf Angle	Semi-Erect
Plant Height	Medium
Ear Height	Medium
Ear Type	Semi-Determinate
Population	Medium High
Test Weight	3

Test Weight Rating Scale (1-5)  
A higher score indicates a heavier test weight

### HYBRID POSITIONING & ADAPTABILITY

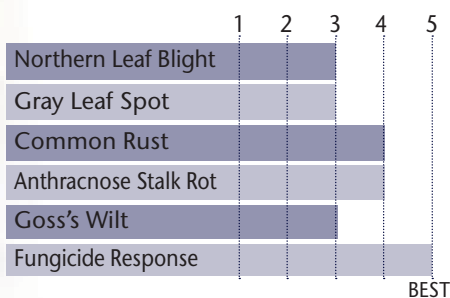


### MATURITY ZONE MAP



- Zone 1 – 85 and earlier
- Zone 2 – 90
- Zone 3 – 95
- Zone 4 – 100
- Zone 5 – 105
- Zone 6 – 110
- Zone 7 – 115
- Zone 8 – 120 and later

### DISEASE TOLERANCE RATINGS



5 = Excellent 4 = Very Good 3 = Average 2 = Below Average 1 = Poor

\*All ratings presented are from past performance and do not ensure future results