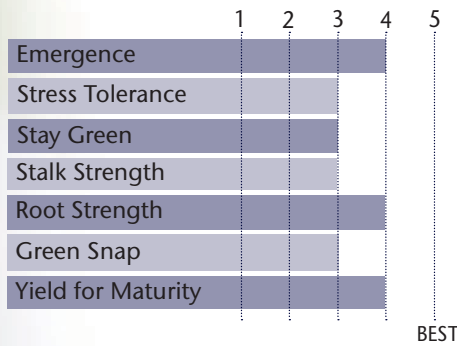


SHOWY HYBRID WITH STRONG YIELD POTENTIAL



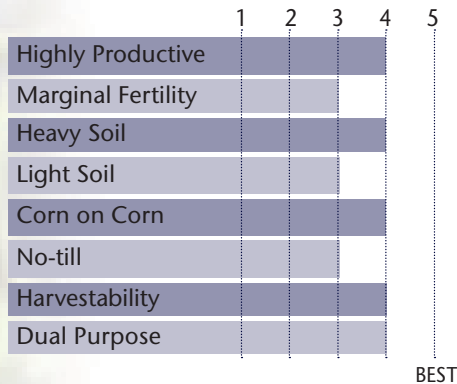
- Good east to west movement
- Position on productive soils for big yields
- Potential dual purpose hybrid
- Moves north well as a full season hybrid
- Great replant hybrid

AGRONOMIC CHARACTERISTICS



GDU to Flowering	1230
GDU to Black Layer	2350
Refuge Requirement	5% RIB
Herbicide Tolerance	RR/LL

HYBRID POSITIONING & ADAPTABILITY

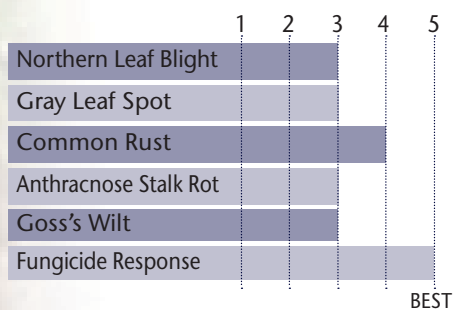


PLANT & EAR CHARACTERISTICS

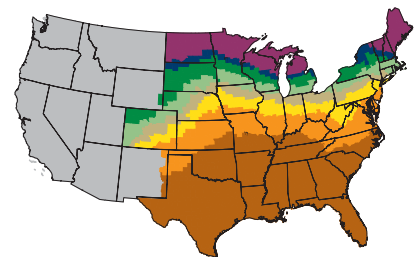
Leaf Angle	Semi-Erect
Plant Height	Medium
Ear Height	Medium
Ear Type	Semi-Determinate
Population	Medium High - High
Test Weight	4

Test Weight Rating Scale (1-5)
A higher score indicates a heavier test weight

DISEASE TOLERANCE RATINGS



MATURITY ZONE MAP



- Zone 1 – 85 and earlier
- Zone 2 – 90
- Zone 3 – 95
- Zone 4 – 100
- Zone 5 – 105
- Zone 6 – 110
- Zone 7 – 115
- Zone 8 – 120 and later