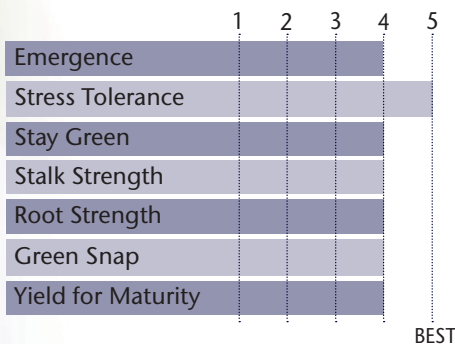


GENUITY® DROUGHTGARD® OPTION WITH EXCELLENT YIELD STABILITY



- Defensive hybrid with very good top-end yield
- Excellent performance south of zone
- Very good stalk strength & late season appearance
- Top performance on tough & variable soil types

AGRONOMIC CHARACTERISTICS



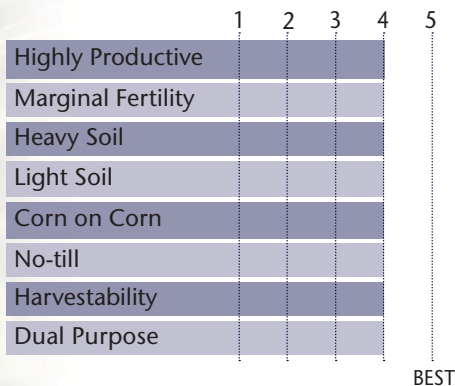
GDU to Flowering	1290
GDU to Black Layer	2460
Refuge Requirement	5% RIB
Herbicide Tolerance	RR

PLANT & EAR CHARACTERISTICS

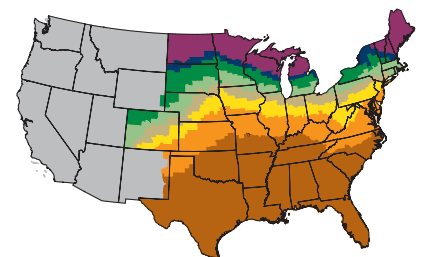
Leaf Angle	Semi-Erect
Plant Height	Medium
Ear Height	Medium
Ear Type	Semi-Flex
Population	Medium - Medium High
Test Weight	3

Test Weight Rating Scale (1-5)
A higher score indicates a heavier test weight

HYBRID POSITIONING & ADAPTABILITY

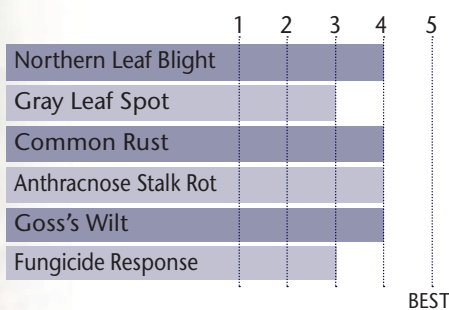


MATURITY ZONE MAP



- Zone 1 – 85 and earlier
- Zone 2 – 90
- Zone 3 – 95
- Zone 4 – 100
- Zone 5 – 105
- Zone 6 – 110
- Zone 7 – 115
- Zone 8 – 120 and later

DISEASE TOLERANCE RATINGS





**PACKAGE WITH: 86-96 2P
92-99 2P
TP 58-01 2P
84-03 2P
TP 53-03 2P**

STATE	CITY	TRIAL	YIELD	RANK*	ENTRIES
IA	Reinbeck	PRO 83	225	1	25
IA	Cedar Rapids	PRO 83	184.8	7	25
IA	Paullina	FIRST	222.4	10	72
IA	Maynard	PRO 83	200	11	25
IA	Nashua	PRO 83	188.6	11	25
IA	Nashua	ISU	196.58	12	44
IA	Spencer	PRO 83	143.2	12	25
IA	Sheldon	PRO 83	184.1	14	25
MN	Wells	PRO 83	223.5	2	25
MN	Madison Lake	FIRST	208.2	4	54
MN	Kerkhoven	FIRST	237	6	54
MN	Albert Lea	PRO 83	174.8	6	25
MN	Dakota/Rice County	County Plot	203.5	7	19
MN	Dakota/Rice County	County Plot	225.7	8	19
MN	Dakota/Rice County	County Plot	203	9	19
MN	Sleepy Eye	PRO 83	223.7	10	25
MN	Renville County	County Plot	220.7	10	26
MN	Dakota/Rice County	County Plot	207.1	11	18
MN	Sanborn	PRO 83	205.4	11	25
MN	Dakota/Rice County	County Plot	202.4	12	19
MN	Renville County	County Plot	198.6	12	26
MN	Dakota/Rice County	County Plot	191	15	18
SD	Bath	FIRST	256.8	2	54
SD	Aberdeen	PRO 83	240.3	4	25
SD	Canton	PRO 83	239.4	12	25

Refer to 2019 Seed Guide for additional TP 65-00 DG2P performance highlights

*All data is from 2018 harvest

*Rank is determined by yield

*No product recommendation by F.I.R.S.T. or other 3rd parties is implied

*Always read and follow bag tags, and understand herbicide tolerance information

