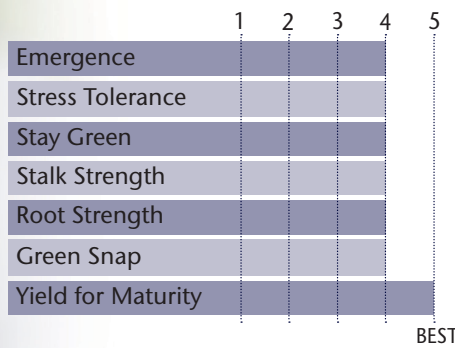


## THE COMPLETE PACKAGE; TOP-END YIELD WITH AGRONOMICS



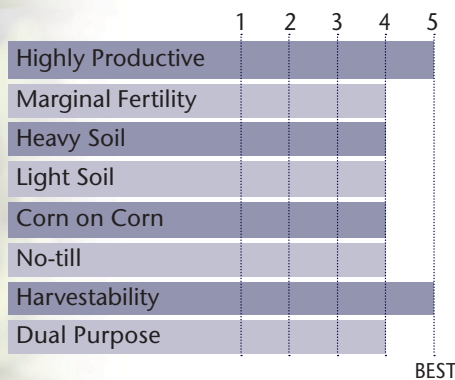
- Handles all soil types from variable to highly productive
- Outstanding grain quality & test weight
- Robust plant type with season long standability
- Responds to high populations in all yield environments
- Great choice for a dual purpose hybrid

### AGRONOMIC CHARACTERISTICS



GDU to Flowering	1410
GDU to Black Layer	2850
Refuge Requirement	5% RIB
Herbicide Tolerance	RR/LL

### HYBRID POSITIONING & ADAPTABILITY

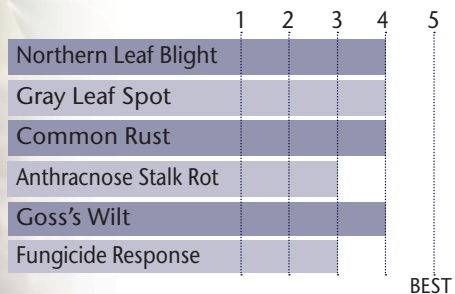


### PLANT & EAR CHARACTERISTICS

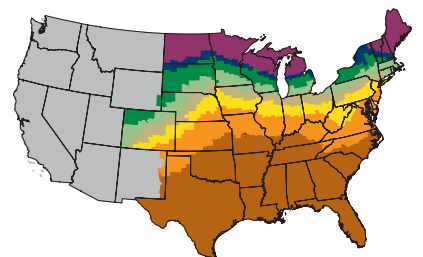
Leaf Angle	Semi-Erect
Plant Height	Tall
Ear Height	Medium High
Ear Type	Semi-Determinate
Population	Medium - Medium High
Test Weight	4

Test Weight Rating Scale (1-5)  
A higher score indicates a heavier test weight

### DISEASE TOLERANCE RATINGS



### MATURITY ZONE MAP



- Zone 1 – 85 and earlier
- Zone 2 – 90
- Zone 3 – 95
- Zone 4 – 100
- Zone 5 – 105
- Zone 6 – 110
- Zone 7 – 115
- Zone 8 – 120 and later

5 = Excellent 4 = Very Good 3 = Average 2 = Below Average 1 = Poor  
\*All ratings presented are from past performance and do not ensure future results



**PACKAGE WITH: TP 71-12 DG2P  
TP 59-08 SS  
TP 74-12 SS  
82-14 2P**

STATE	CITY	TRIAL	YIELD	RANK*	ENTRIES
IA	Milo	PRO 85	240.1	<b>1</b>	20
IA	Corning	PRO 85	197.5	<b>9</b>	20
IA	Luther	PRO 85	233.4	<b>14</b>	20
IA	Griswold	PRO 85	242.5	<b>15</b>	20
IA	Slater	PRO 85	188	<b>15</b>	20
IL	Roseville	PRO 85	265.6	<b>7</b>	20
IL	Bloomington	PRO 85	185.9	<b>9</b>	20
IL	Geneseo	PRO 85	249.3	<b>13</b>	20
IL	Monmouth	PRO 85	194.6	<b>14</b>	20
NE	Tekamah	PRO 85	232.8	<b>10</b>	20
NE	Arlington	PRO 85	179.3	<b>13</b>	20

Refer to 2019 Seed Guide for additional TP 68-14 SS performance highlights

\*All data is from 2018 harvest

\*Rank is determined by yield

\*No product recommendation by F.I.R.S.T. or other 3rd parties is implied

\*Always read and follow bag tags, and understand herbicide tolerance information