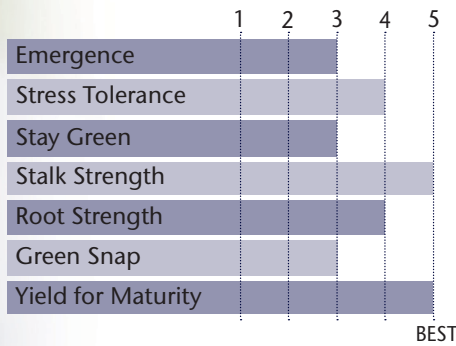


CONSISTENT EAR DEVELOPMENT PLUS DEEP KERNELS EQUALS BIG YIELDS



- Elite yield performance at high plant populations
- Widely adaptable across regions
- Excellent yield response to fungicide applications
- Outperformed P1197AM by 0.8 bu/ac across 15 locations in 2018
- Also available as TP 71-12 DG2P

AGRONOMIC CHARACTERISTICS



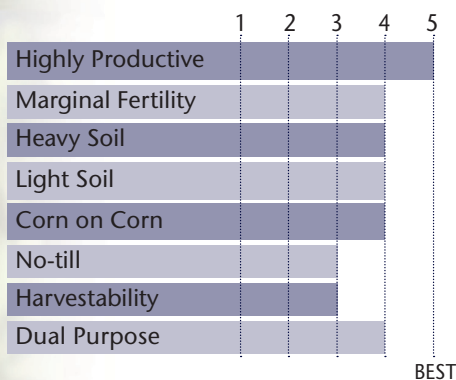
GDU to Flowering	1300
GDU to Black Layer	2780
Refuge Requirement	None
Herbicide Tolerance	None

PLANT & EAR CHARACTERISTICS

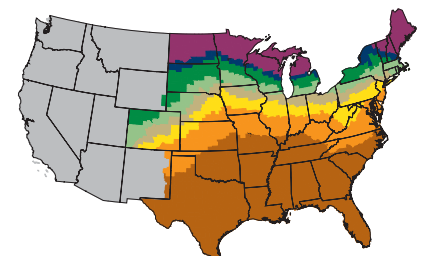
Leaf Angle	Erect
Plant Height	Medium
Ear Height	Medium
Ear Type	Semi-Determinate
Population	Medium High - High
Test Weight	3

Test Weight Rating Scale (1-5)
A higher score indicates a heavier test weight

HYBRID POSITIONING & ADAPTABILITY

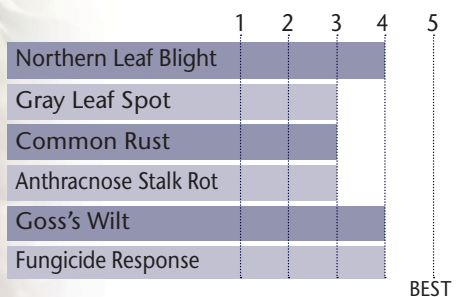


MATURITY ZONE MAP



- Zone 1 – 85 and earlier
- Zone 2 – 90
- Zone 3 – 95
- Zone 4 – 100
- Zone 5 – 105
- Zone 6 – 110
- Zone 7 – 115
- Zone 8 – 120 and later

DISEASE TOLERANCE RATINGS



5 = Excellent 4 = Very Good 3 = Average 2 = Below Average 1 = Poor
*All ratings presented are from past performance and do not ensure future results

TP 70-12 ALSO AVAILABLE AS TP 71-12 DG2P

112 RM

Titan^{pro}
Conventional

**PACKAGE WITH: 96-06 2P
TP 77-06 SS
92-09
94-09 2P**

STATE	CITY	TRIAL	YIELD	RANK*	ENTRIES
IA	Milo	PRO 85	208.2	3	20
IA	Luther	PRO 85	265	5	20
IA	Corning	PRO 85	204.4	8	20
IA	Griswold	PRO 85	254.4	10	20
IA	Slater	PRO 85	189	13	20
IL	Monmouth	PRO 85	214.1	6	20
IL	Geneseo	PRO 85	248.8	14	20
NE	Tekamah	PRO 85	236.8	8	20

*All data is from 2018 harvest

*Rank is determined by yield

*No product recommendation by F.I.R.S.T. or other 3rd parties is implied

*Always read and follow bag tags, and understand herbicide tolerance information

Titan^{pro}