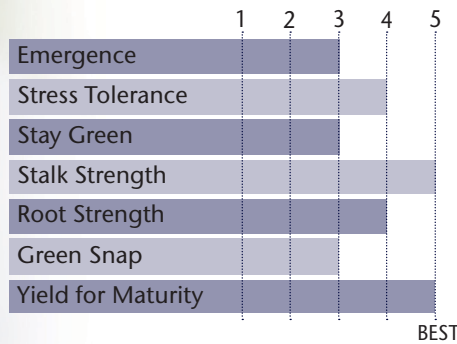


CONSISTENT EAR DEVELOPMENT PLUS DEEP KERNELS EQUALS BIG YIELDS



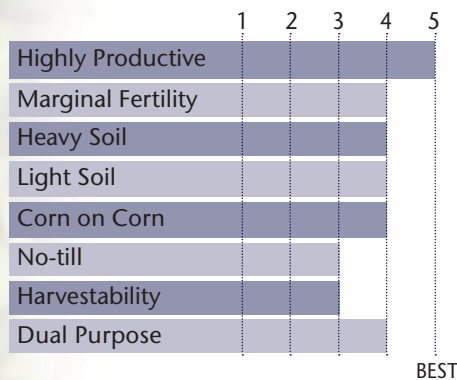
- Elite yield performance at high plant populations
- Widely adaptable across regions
- Excellent yield response to fungicide applications
- Outperformed P1197AM by 0.8 bu/ac across 15 locations in 2018
- Also available as TP 70-12

AGRONOMIC CHARACTERISTICS



GDU to Flowering	1300
GDU to Black Layer	2780
Refuge Requirement	5% RIB
Herbicide Tolerance	RR

HYBRID POSITIONING & ADAPTABILITY

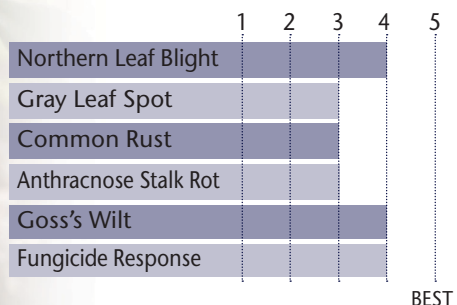


PLANT & EAR CHARACTERISTICS

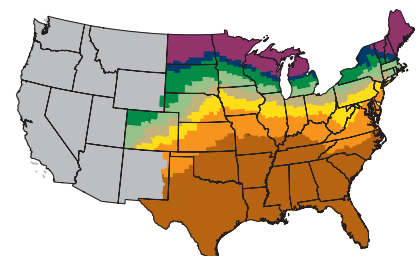
Leaf Angle	Erect
Plant Height	Medium
Ear Height	Medium
Ear Type	Semi-Determinate
Population	Medium High - High
Test Weight	3

Test Weight Rating Scale (1-5)
A higher score indicates a heavier test weight

DISEASE TOLERANCE RATINGS



MATURITY ZONE MAP



- Zone 1 – 85 and earlier
- Zone 2 – 90
- Zone 3 – 95
- Zone 4 – 100
- Zone 5 – 105
- Zone 6 – 110
- Zone 7 – 115
- Zone 8 – 120 and later

5 = Excellent 4 = Very Good 3 = Average 2 = Below Average 1 = Poor
*All ratings presented are from past performance and do not ensure future results



**PACKAGE WITH: 96-06 2P
91-07
92-09
94-09 2P**

STATE	CITY	TRIAL	YIELD	RANK*	ENTRIES
IA	Sully	FIRST	291.9	2	60
IA	Luther	PRO 85	269.3	3	20
IA	Crawfordsville	PRO 85	246.7	3	20
IA	Corning	PRO 85	222	3	20
IA	Clarence	ISU	276.65	5	52
IA	Slater	PRO 85	214.2	6	20
IA	Griswold	PRO 85	255.5	8	20
IA	Milo	PRO 85	201.3	8	20
IA	Central City	FIRST	272.3	9	60
IA	Glidden	ISU	226.6	11	52
IA	Slater	PRO 85	190.5	11	20
IA	Griswold	PRO 85	251	12	20
IA	Luther	PRO 85	235.2	13	20
IA	Ames	ISU	206.55	15	52
IA	Lewis	PRO 85	91.3	15	20
IL	Roseville	PRO 85	279.5	2	20
IL	Geneseo	PRO 85	271.5	3	20
IL	Bloomington	PRO 85	194.8	5	20
IL	Geneseo	PRO 85	264.4	6	20
IL	Monmouth	PRO 85	210.4	7	20
IL	Bloomington	PRO 85	175.6	13	20
IL	Monmouth	PRO 85	191.9	15	20
NE	Arlington	PRO 85	197.1	11	20
NE	Tekamah	PRO 85	210.8	12	20

Refer to 2019 Seed Guide for additional TP 71-12 DG2P performance highlights

*All data is from 2018 harvest

*Rank is determined by yield

*No product recommendation by F.I.R.S.T. or other 3rd parties is implied

*Always read and follow bag tags, and understand herbicide tolerance information

