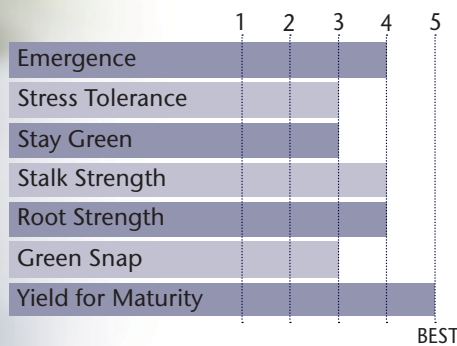


TOP PERFORMER IN HIGH MANAGEMENT PRODUCTION SYSTEMS



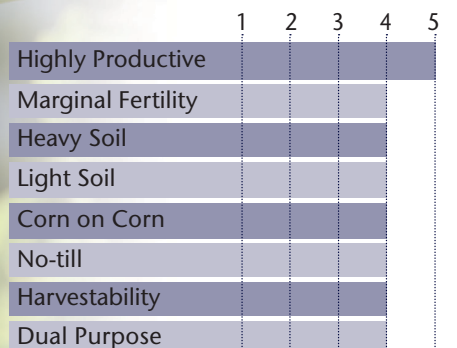
- Semi-flex ear type with excellent grain quality & test weight
- Very good early plant vigor for early planting in cool soils
- Medium tall plant type with very good root & stalk strength
- Excellent candidate for fungicide application
- 62% win rate over P1197AMXT across 295 locations in 2016-2018
- 70% win rate over P1257AMXT across 33 locations in IA

AGRONOMIC CHARACTERISTICS



GDU to Flowering	1340
GDU to Black Layer	2750
Refuge Requirement	5% RIB
Herbicide Tolerance	RR/LL

HYBRID POSITIONING & ADAPTABILITY

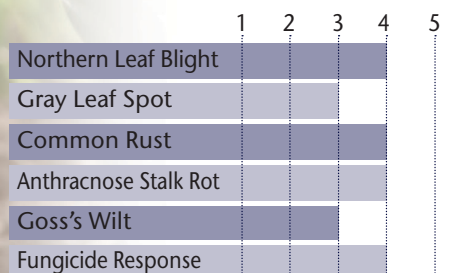


PLANT & EAR CHARACTERISTICS

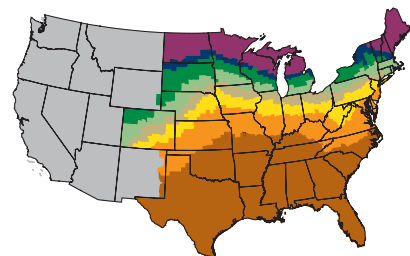
Leaf Angle	Semi-Erect
Plant Height	Medium Tall
Ear Height	Medium
Ear Type	Semi-Flex
Population	Medium - Medium High
Test Weight	4

Test Weight Rating Scale (1-5)
A higher score indicates a heavier test weight

DISEASE TOLERANCE RATINGS



MATURITY ZONE MAP



- Zone 1 – 85 and earlier
- Zone 2 – 90
- Zone 3 – 95
- Zone 4 – 100
- Zone 5 – 105
- Zone 6 – 110
- Zone 7 – 115
- Zone 8 – 120 and later

5 = Excellent 4 = Very Good 3 = Average 2 = Below Average 1 = Poor
*All ratings presented are from past performance and do not ensure future results



**PACKAGE WITH: TP 59-08 SS
94-09 2P
TP 71-12 DG2P
82-14 2P**

STATE	CITY	TRIAL	YIELD	RANK*	ENTRIES
IA	Luther	PRO 85	268.3	4	20
IA	Slater	PRO 85	219.9	5	20
IA	Corning	ISU	218.79	7	43
IA	Lewis	PRO 85	159.2	8	20
IA	Crawfordsville	PRO 85	234.1	8	20
IA	Corning	PRO 85	195	10	20
IA	Keystone	ISU	252.58	12	52
IL	Roseville	PRO 85	281.3	1	20
IL	Geneseo	PRO 85	257.4	9	20
IL	Monmouth	PRO 85	203	10	20
IL	Bloomington	PRO 85	180.9	11	20
NE	Arlington	PRO 85	199.9	10	20
NE	Tekamah	PRO 85	208.1	13	20

Refer to 2019 Seed Guide for additional TP 74-12 SS performance highlights

*All data is from 2018 harvest

*Rank is determined by yield

*No product recommendation by F.I.R.S.T. or other 3rd parties is implied

*Always read and follow bag tags, and understand herbicide tolerance information

