

Test by: Southern MN FIRST New Richland, MN

## 2020 Soybeans Top 30 Harvest Report

Minnesota South Central [MNSC] NERSTRAND, MN  
Wheeling Grain Partnership, Keith, Kurt and Brian Schrader,  
Rice County, MN 55053

<b>Early-Season Test</b>	1.5 - 1.8 Day CRM S2020MNSC07a
<b>Top 30 of 48</b>	For Gross Income (Sorted by Yield) Average of (3) Replications
<b>PREV. CROP/HERB:</b>	Corn / Surestart II, Liberty
<b>SOIL DESCRIPTION:</b>	Blooming silt loam, well drained, non-irrigated
<b>SOIL CONDITION:</b>	medium P, medium K, 6.3 pH, 4.6% OM, 23.3 CEC
<b>TILLAGE/CULTIVATION:</b>	Conventional W/ Fall Till
<b>PEST MANAGEMENT:</b>	Zidual Pro, Flexstar, Intensity, Priaxor
<b>Applied N-P-K (units):</b>	14-70-90
<b>SEEDED - RATE - ROW:</b>	May 6 140.0 /A 30" spacing
<b>HARVESTED - STAND:</b>	Oct 18 124.4 /A

### TEST COMMENTS:

*Ideal planting conditions led to early emergence. This allowed earlier flowering beating the dry spell that affected pod retention in August. This area had timely rains and sunshine through July. August and September brought drier weather. October 2nd brought hail across the plot and surrounding field. This knocked an excessive amount of beans from their pods and drastically reduced yield. While test statistics were good, the results presented here should be used with caution due to potentially uneven damage from the hail (see photos). The site will not be included in the region summary.*

Company/Brand	Product/Brand	Technol.†	RM	SCN Resist.	Yield Bu/A ↓	Moisture %	Lodging %	Stand (x 1000)	Gross Income \$/Acre	Rank
LATHAM	L 1858 R2	RR2Y	1.8	R	<b>59.1</b>	11.9	0	124.7	561	1
PIONEER	P18A98X §	RRX	1.8	R	<b>56.6</b>	12.6	0	124.3	538	2
HEFTY	H18X8	RRX	1.8	MR	<b>56.4</b>	11.9	0	125.7	536	3
GENESIS	G1680GL GC	LLGT27	1.6	R	<b>55.9</b>	12.3	0	124.3	531	4
HEFTY	H16X1	RRX	1.6	R	<b>55.4</b>	11.9	0	124.7	526	6
LATHAM	L 1758 E3	E3	1.7	R	<b>54.8</b>	13.4	0	124.3	520	7
TITAN PRO	15GL9	LLGT27	1.5	R	<b>54.5</b>	12.7	0	124.7	518	8
ANDERSON	A180E3	E3	1.8	NA	<b>54.2</b>	12.5	0	124.3	515	9
GOLD COUNTRY	1609X	RRX	1.6	R	<b>53.9</b>	12.2	0	124.3	512	10
CREDENZ	CZ 1660GTLL	LLGT27	1.6	MR	<b>53.0</b>	12.6	0	125.0	504	11
TITAN PRO	17E0	E3	1.7	R	<b>52.8</b>	12.3	0	125.0	502	12
LATHAM	L 1648 LLGT27	LLGT27	1.6	R	<b>52.7</b>	12.8	0	125.0	501	13
ZINESTO	Z1601E	E3	1.6	R	<b>52.4</b>	12.0	0	124.3	498	14
FEDERAL	F1709N	LLGT27	1.7	R	<b>52.2</b>	12.3	0	123.7	496	15
GENESIS	G1750E	E3	1.7	R	<b>51.8</b>	13.2	0	125.0	492	16
STINE	16EC32 §	E3	1.6	R	<b>51.7</b>	12.2	0	125.3	491	17
LOYAL	L1430E	E3	1.4	R	<b>51.2</b>	12.8	0	124.7	486	18
APEX	AE1710	E3	1.7	R	<b>51.2</b>	13.2	0	123.7	486	19
HEFTY	H18X1	RRX	1.8	R	<b>50.6</b>	12.4	0	122.7	481	20
TITAN PRO	15E0	E3	1.5	R	49.8	13.1	0	123.3	473	21
GENESIS	G1450E	E3	1.4	R	49.8	13.6	0	123.3	472	22
ZINESTO	Z1701G	LLGT27	1.7	R	49.7	12.8	0	125.7	472	23
CREDENZ	CZ 1859GTLL	LLGT27	1.8	R	49.7	12.2	0	125.7	472	24
VIKING	1518N	CONV	1.5	MR	49.6	13.6	0	124.7	470	25
GENESIS	G1650E	E3	1.6	R	49.4	12.8	0	124.3	469	26
PIONEER	P15A88X §	RRX	1.5	R	49.2	12.8	0	124.3	467	27
ANDERSON	180RXT	RRX	1.8	MR	47.9	12.3	0	124.7	455	28
RENK	RS181NX	RRX	1.8	R	47.6	12.2	0	125.0	452	29
FEDERAL	F1601N	E3	1.6	NA	46.7	12.1	0	123.7	444	30
GOLDEN HARVEST	GH1763E3	E3	1.7	MR	45.7	13.8	0	125.5	433	31
ASGROW	AG21X9 CK	RRX	2.1	R	55.6	12.6	0	124.3	528	5
					Averages =	<b>48.2</b>	<b>12.8</b>	<b>0</b>	<b>124.4</b>	<b>457</b>
					LSD (0.10) =	2.5	0.7	ns		
					LSD (0.25) =	1.3	0.4	ns		
					C.V. =	4.9				
					Historic yield: 65.7 bu/a, 3 yr(s)					

*Mark Querna*

Mark Querna

mark.querna@firstseedtests.com, (507) 380-9920

**Yield & Income Factors:** Base Moisture = 13.0% Shrink = 1.4 Drying = \$0.04 Prices: GMO = \$9.50

Report Date: 10/19/2020

† See last page for abbreviation descriptions. Dark colored row identifies the check product found in early- and full-season tests. **Bold** yields are significantly above test average by LSD(0.10). **Italicized** brands exceed the grain moisture limit for this test. **ns** = column values not significantly different

©2020, All rights reserved by Elite Field Genetics, LLC

Additional reports available at [www.firstseedtests.com](http://www.firstseedtests.com)

Test by: Southern MN FIRST New Richland, MN

## 2020 Soybeans Top 30 Harvest Report

Minnesota South Central [MNSC] NERSTRAND, MN  
Wheeling Grain Partnership, Keith, Kurt and Brian Schrader,  
Rice County, MN 55053

<b>Full-Season Test</b>	1.9 - 2.2 Day CRM S2020MNSC07b
<b>Top 30 of 48</b>	For Gross Income (Sorted by Yield) Average of (3) Replications
<b>PREV. CROP/HERB:</b>	Corn / Surestart II, Liberty
<b>SOIL DESCRIPTION:</b>	Blooming silt loam, well drained, non-irrigated
<b>SOIL CONDITION:</b>	medium P, medium K, 6.3 pH, 4.6% OM, 23.3 CEC
<b>TILLAGE/CULTIVATION:</b>	Conventional W/ Fall Till
<b>PEST MANAGEMENT:</b>	Zidual Pro, Flexstar, Intensity, Priaxor
<b>Applied N-P-K (units):</b>	14-70-90
<b>SEEDED - RATE - ROW:</b>	May 6 140.0 /A 30" spacing
<b>HARVESTED - STAND:</b>	Oct 18 124.0 /A

### TEST COMMENTS:

*Ideal planting conditions led to early emergence. This allowed earlier flowering beating the dry spell that affected pod retention in August. This area had timely rains and sunshine through July. August and September brought drier weather. October 2nd brought hail across the plot and surrounding field. This knocked an excessive amount of beans from their pods and drastically reduced yield. While test statistics were good, the results presented here should be used with caution due to potentially uneven damage from the hail (see photos). The site will not be included in the region summary.*

Company/Brand	Product/Brand	Technol.†	RM	SCN Resist.	Yield Bu/A ↓	Moisture %	Lodging %	Stand (x 1000)	Gross Income \$/Acre	Rank
DAIRYLAND	DSR-2112E	E3	2.1	R	<b>73.1</b>	13.0	0	123.7	694	1
VIKING	2155N	CONV	2.1	MR	<b>72.3</b>	13.3	0	124.0	686	2
ZINESTO	Z2101E	E3	2.1	R	<b>69.0</b>	13.1	0	122.7	655	3
LEGEND	19E152N GC	E3	1.9	NA	<b>68.9</b>	12.6	0	123.3	655	4
LOYAL	L2130E	E3	2.1	R	<b>68.7</b>	12.9	0	126.0	653	5
GENESIS	G2150E	E3	2.1	R	<b>68.7</b>	12.9	0	124.0	653	6
PIONEER	P21A28X §	RRX	2.1	R	<b>68.4</b>	12.9	0	123.7	650	7
TITAN PRO	21E0	E3	2.1	R	<b>68.2</b>	12.3	0	124.3	648	8
APEX	AE2110	E3	2.1	R	<b>68.2</b>	12.5	0	124.0	648	9
FEDERAL	F2001N	E3	2.0	R	<b>66.6</b>	12.9	0	123.7	633	10
ANDERSON	A200E3	E3	2.0	NA	<b>66.5</b>	12.6	0	122.3	632	11
GOLD COUNTRY	2249X	RRX	2.2	R	<b>66.4</b>	12.5	0	124.7	631	12
NK BRAND	S21-W8X §	RRX	2.1	R	65.7	12.1	0	124.7	624	13
GOLDEN HARVEST	GH2011E3	E3	2.0	MR	65.6	13.3	0	123.3	622	14
CREDENZ	CZ 2360GTLL	LLGT27	2.3	MR	65.3	12.5	0	125.0	620	15
ZINESTO	Z2001E	E3	2.0	R	65.1	14.1	0	124.3	616	16
TITAN PRO	20E9	E3	2.0	R	64.6	12.9	0	123.3	614	17
DAIRYLAND	DSR-2030E	E3	1.9	R	64.4	12.7	0	123.0	612	18
STINE	19EC32 §	E3	1.9	R	63.6	13.3	0	125.0	604	19
GENESIS	G2190GL	LLGT27	2.1	R	63.5	14.0	0	124.7	601	21
LATHAM	L 2193 E3	E3	2.1	R	63.4	13.3	0	124.0	602	20
ZINESTO	Z2101G	LLGT27	2.1	R	63.2	12.8	0	125.0	600	22
CREDENZ	CZ 2040GTLL	LLGT27	2.0	R	62.9	13.1	0	123.0	597	23
FEDERAL	F2201N	E3	2.2	R	61.8	12.8	0	124.7	587	24
DYNA-GRO	S21XT49	RRX	2.1	R	61.8	12.1	0	125.3	587	25
FEDERAL	F1901N	E3	1.9	R	61.6	12.7	0	122.7	585	27
ASGROW	AG20X9 §	RRX	2.0	R	61.4	12.3	0	124.0	583	28
LATHAM	L 2228 R2	RR2Y	2.2	R	60.9	13.0	0	123.3	579	29
ASGROW	AG19X0 §	RRX	1.9	R	60.9	13.4	0	124.3	577	30
DYNA-GRO	S19EN21	E3	1.9	R	60.6	12.2	0	125.7	576	31
ASGROW	AG21X9 CK	RRX	2.1	R	61.7	12.9	0	123.0	586	26

*Mark Querna*

Mark Querna

mark.querna@firstseedtests.com, (507) 380-9920

Averages = **62.6** **12.9** **0** **124.0** **594**

LSD (0.10) = 3.2 ns ns

LSD (0.25) = 1.7 ns ns

C.V. = 4.9

Historic yield: 65.7 bu/a, 3 yr(s)

**Yield & Income Factors:** Base Moisture = 13.0% Shrink = 1.4 Drying = \$0.04 Prices: GMO = \$9.50

Test by: Southern MN FIRST New Richland, MN

## 2020 Soybeans Top 30 Harvest Report

Minnesota South Central [MNSC] NERSTRAND, MN  
Wheeling Grain Partnership, Keith, Kurt and Brian Schrader,  
Rice County, MN 55053

### TEST COMMENTS:

*Ideal planting conditions led to early emergence. This allowed earlier flowering beating the dry spell that affected pod retention in August. This area had timely rains and sunshine through July. August and September brought drier weather. October 2nd brought hail across the plot and surrounding field. This knocked an excessive amount of beans from their pods and drastically reduced yield. While test statistics were good, the results presented here should be used with caution due to potentially uneven damage from the hail (see photos). The site will not be included in the region summary.*

Yield map from Nerstrand, MN plot. Unharvested block is the FIRST plot.

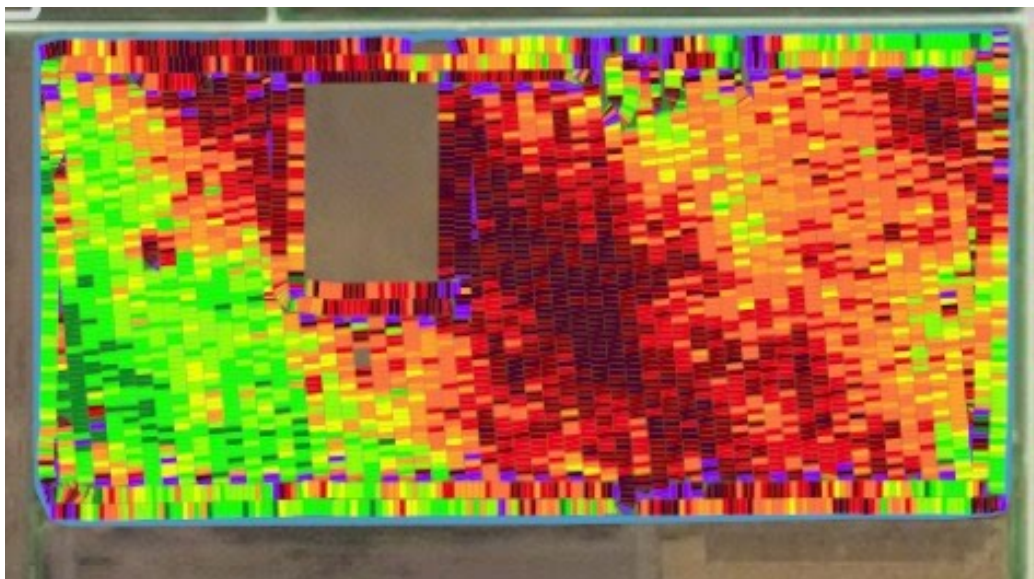


Photo taken at harvest, Nerstrand, MN. Dropped beans from hail damage.



Report Date: 10/19/2020

Additional reports available at [www.firstseedtests.com](http://www.firstseedtests.com)

† See last page for abbreviation descriptions. Dark colored row identifies the check product found in early- and full-season tests. **Bold** yields are significantly above test average by LSD(0.10). **Italicized** brands exceed the grain moisture limit for this test. **ns** = column values not significantly different

©2020, All rights reserved by Elite Field Genetics, LLC

## 2020 Soybeans - Minnesota South Central [ MNSC ]

### Early-Season Test Products (48 Total)

Company/Brand	Product/Brand	Technology	SCN	RM	Seed Treat.
ANDERSON	159RXT	RRX	MR	1.5	Untreated
ANDERSON	179RXT	RRX	MR	1.7	Untreated
ANDERSON	180RXT	RRX	MR	1.8	Untreated
ANDERSON	A180E3	E3	NA	1.8	Untreated
APEX	AE1710	E3	R	1.7	CMBV,SA
ASGROW	AG17X8 §	RRX	R	1.7	ACi,IL
ASGROW	AG21X9 CK	RRX	R	2.1	Treated
CREDENZ	CZ 1660GTLL	LLGT27	MR	1.6	PV,IL,OB
CREDENZ	CZ 1859GTLL	LLGT27	R	1.8	PV,IL,OB
DAIRYLAND	DSR-1673E	E3	R	1.6	Lum,Lu,IL
DYNA-GRO	S17EN80	E3	R	1.7	EQV,SA
DYNA-GRO	S17XT29	RRX	R	1.7	EQV,SA
FEDERAL	F1601N	E3	NA	1.6	Untreated
FEDERAL	F1709N	LLGT27	R	1.7	Untreated
GENESIS	G1450E	E3	R	1.4	CMBV,SA
GENESIS	G1650E	E3	R	1.6	CMBV,SA
GENESIS	G1680GL GC	LLGT27	R	1.6	EcTC
GENESIS	G1750E	E3	R	1.7	CMBV,SA
GOLD COUNTRY	1609X	RRX	R	1.6	ACi,IL
GOLDEN HARVEST	GH1638X §	RRX	MR	1.6	CMBV,SA
GOLDEN HARVEST	GH1763E3	E3	MR	1.7	CMBV,SA
HCI	HC-02 GC	CONV	NA	0.2	Untreated
HEFTY	H16X1	RRX	R	1.6	HCS
HEFTY	H17X9	RRX	MR	1.7	HCS
HEFTY	H18X1	RRX	R	1.8	HCS
HEFTY	H18X8	RRX	MR	1.8	HCS
LATHAM	L 1648 LLGT27	LLGT27	R	1.6	SS+
LATHAM	L 1758 E3	E3	R	1.7	SS+
LATHAM	L 1769 R2X	RRX	R	1.7	SS+
LATHAM	L 1858 R2	RR2Y	R	1.8	SS+
LOYAL	L1430E	E3	R	1.4	CMBV,SA
NK BRAND	S04-K9 GC	CONV	R	0.4	ViM,NO
NK BRAND	S14-U9X	RRX	MR	1.4	CMBV,SA
NK BRAND	S16-K2X	RRX	MR	1.6	CMBV,SA
NK BRAND	S18-R6 GC	CONV	R	1.8	Untreated
PIONEER	P15A88X §	RRX	R	1.5	Lum,Lu

Company/Brand	Brand/Product	Technology	RM	SCN	Seed Treat.
PIONEER	P18A98X §	RRX	R	1.8	Lum,Lu
PROSEEDS	SKYLINE GC	CONV	R	1.1	Untreated
RENK	RS150NX	RRX	R	1.5	EcTC
RENK	RS181NX	RRX	R	1.8	EcTC
STINE	16EC32 §	E3	R	1.6	VFI,SA
TITAN PRO	15E0	E3	R	1.5	SA,A,R,G
TITAN PRO	15GL9	LLGT27	R	1.5	SA,A,R,G
TITAN PRO	17E0	E3	R	1.7	SA,A,R,G
TITAN PRO	18E9	E3	R	1.8	SA,A,R,G
VIKING	1518N	CONV	MR	1.5	Untreated
ZINESTO	Z1601E	E3	R	1.6	DST
ZINESTO	Z1701G	LLGT27	R	1.7	DST

## 2020 Soybeans - Minnesota South Central [ MNSC ]

### Full-Season Test Products (48 Total)

Company/Brand	Product/Brand	Technology	SCN	RM	Seed Treat.
ANDERSON	217RXT	RRX	MR	2.0	Untreated
ANDERSON	A200E3	E3	NA	2.0	Untreated
APEX	AE1910	E3	R	1.9	CMBV,SA
APEX	AE2110	E3	R	2.1	CMBV,SA
ASGROW	AG19X0 §	RRX	R	1.9	ACi
ASGROW	AG20X9 §	RRX	R	2.0	ACi
ASGROW	AG21X9 CK	RRX	R	2.1	Treated
CREDENZ	CZ 2040GTLL	LLGT27	R	2.0	PV,IL,OB
CREDENZ	CZ 2360GTLL	LLGT27	MR	2.3	PV,IL,OB
DAIRYLAND	DSR-2030E	E3	R	1.9	Lum,Lu,IL
DAIRYLAND	DSR-2112E	E3	R	2.1	Lum,Lu,IL
DAIRYLAND	DSR-2259E	E3	R	2.2	Lum,Lu,IL
DAIRYLAND	E20-101E	E3	R	2.2	Lum,Lu,IL
DYNA-GRO	S19EN21	E3	R	1.9	EQV,SA
DYNA-GRO	S19XT30	RRX	R	1.9	EQV,SA
DYNA-GRO	S21XT49	RRX	R	2.1	EQV,SA
FEDERAL	F1901N	E3	R	1.9	Untreated
FEDERAL	F2001N	E3	R	2.0	Untreated
FEDERAL	F2201N	E3	R	2.2	Untreated
GENESIS	G1950E	E3	R	1.9	CMBV,SA
GENESIS	G2150E	E3	R	2.1	CMBV,SA
GENESIS	G2190GL	LLGT27	R	2.1	EcTC,SA
GOLD COUNTRY	2249X	RRX	R	2.2	ACi,IL
GOLDEN HARVEST	GH1915X	RRX	R	1.9	CMBV,SA
GOLDEN HARVEST	GH2011E3	E3	MR	2.0	CMBV,SA
LATHAM	L 2084 R2	RR2Y	R	2.0	SS
LATHAM	L 2184 R2X	RRX	R	2.1	SS+
LATHAM	L 2193 E3	E3	R	2.1	SS+
LATHAM	L 2228 R2	RR2Y	R	2.2	SS+
LEGEND	19E152N GC	E3	NA	1.9	YPP
LOYAL	L1930E	E3	R	1.9	CMBV,SA
LOYAL	L2130E	E3	R	2.1	CMBV,SA
NK BRAND	S20-J5X §	RRX	R	2.0	CMBV,SA
NK BRAND	S21-W8X §	RRX	R	2.1	CMBV,SA
PIONEER	P21A28X §	RRX	R	2.1	Lum,Lu
STINE	19EA32 §	E3	R	1.9	VFI,SA

Company/Brand	Brand/Product	Technology	RM	SCN	Seed Treat.
STINE	19EC32 §	E3	R	1.9	VFI,SA
TITAN PRO	19E0	E3	R	1.9	SA,A,R,G
TITAN PRO	20E9	E3	R	2.0	SA,A,R,G
TITAN PRO	21E0	E3	R	2.1	SA,A,R,G
TITAN PRO	22E8	E3	R	2.2	SA,A,R,G
VIKING	1940KN	CONV	R	1.9	AM
VIKING	2018N	CONV	MR	2.0	CMBV
VIKING	2155N	CONV	MR	2.1	CMBV
ZINESTO	Z1900E	E3	R	1.9	DST
ZINESTO	Z2001E	E3	R	2.0	DST
ZINESTO	Z2101E	E3	R	2.1	DST
ZINESTO	Z2101G	LLGT27	R	2.1	DST

## Footnotes and Abbreviations Descriptions

### Brand Footnotes

---

CK	Identifies a check product included in early- and full-season tests.
GC	Grower Comparison product included by FIRST when space permits.
§	United Soybean Board sponsored entry

### Soybean Cyst Nematode (SCN) Resistance Rating

---

S	susceptible
MR	moderate resistance
R	resistant
n/a	info unavailable

### Soybeans Technologies\*

---

CONV	Conventional
E3	Enlist™ E3
LLGT27	LibertyLink® GT27®
RR2Y	Roundup Ready 2 Yield®
RRX	Roundup Ready 2 Xtend®

---

## Soybeans Seed Treatments\*\*

---

NA	Not Available
ACi	Acceleron® Standard Insecticide-Fungicide
ACi,IL	Acceleron Standard Insecticide-Fungicide, ILeVO
AM	ApronMaxx
CMBV	CruiserMaxx Beans, Vibrance
CMBV,SA	Cruisermaxx, Vibrance, Saltro
DST	Dominance 2 ST
EcTC	Eclipse US Total Coverage Trio IM, N-Force
EcTC,SA	Eclipse US Total Coverage Trio IM, N-Force, Saltro
EQV,SA	Equity VIP, Saltro
HCS	Hefty Complete Soybeans
Lum,Lu	Lumigen, Lumisena™
Lum,Lu,IL	Lumigen, Lumisena™, ILeVO
PV,IL,OB	Poncho®/Votivo®, ILeVO, Obvius Plus
SA,A,R,G	Saltro, Allegiance FL, Redigo 480, Gaucho 600
SS	SoyShield
SS+	SoyShield Plus
Treated	Treated, unspecified
Untreated	No seed treatment
VFI,SA	Virile Fungicide+Insecticide, Saltro (BCS Consulting)
ViM,NO	Vibrance Maxx, Nodulator Pro
YPP	YP Pro, QuickRoots

---

\*\* Seed treatments may include unspecified plant health promoting components.