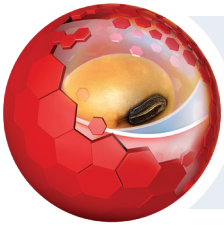


Defend your acres with our extra layers. Titan Pro Fungicide + Insecticide Package features industry-leading LumiTreo™ fungicide seed treatment, providing best-in-class protection against soybeans most offensive yield-robbing diseases.



Win The Season With:



More modes of action against early season diseases



Control against key insects & pests



Strong, healthy plant stands & improved vigor

Robust Fungicide Package

LumiTreo™

FUNGICIDE SEED TREATMENT

LumiTreo contains Oxathiapiprolin, the active in Lumisena® fungicide seed treatment, which offers best-in-class protection against the number one early season disease in soybeans, *Phytophthora*.

LumiTreo backed by Lumisena® Fungicide Seed Treatment

+4 bu/A Yield Advantage*
in field areas with higher *Phytophthora* susceptibility

+1 bu/A Yield Advantage*
across the farm

Multiple Modes Of Action Against Key Diseases

Brand Name	Active ingredient	<i>Phytophthora</i>	<i>Pythium</i>	<i>Rhizoctonia</i>	<i>Fusarium</i>	<i>Phomopsis</i>
LumiTreo™ fungicide seed treatment	Oxathiapiprolin	1				
	Iproconazole			1	1	1
	Picoxystrobin		1	1	1	
Luminate™ fungicide seed treatment	Mefenoxam	1	1			
	Ethaboxam	1	1			
Phalanx™ insecticide seed treatment	Thiamethoxam					
Number of Modes of Action		3	3	2	2	1

*Data is based on 638 head-to-head comparisons between Lumisena® fungicide seed treatment (0.568 fl oz/cwt) and Metalaxyl (0.75 fl oz/cwt) in the top soybean-producing states through Dec. 12, 2017. Comparisons were made utilizing the same soybean variety.



Titan Pro Fungicide + Insecticide Package

Best-in-Class Protection Against *Phytophthora*

Disease control and performance with Lumisena® fungicide seed treatment in *Phytophthora* inoculated soil cups.



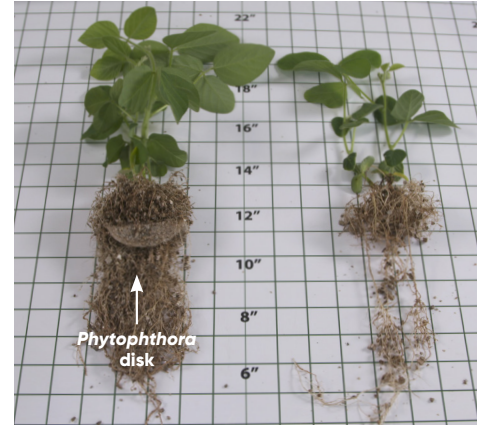
CruiserMaxx® APX



Titan Pro Fungicide + Insecticide Package



Untreated



Roots protected by Lumisena® fungicide seed treatment drive through the diseased disk.

Roots protected by Metalaxyl die or are severely injured upon contact with diseased disk.

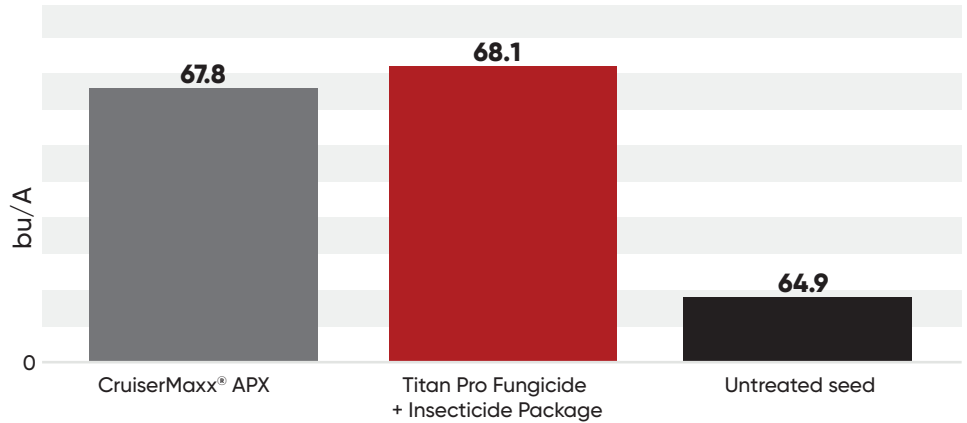
Win More With The Titan Pro Fungicide + Insecticide Package

Broad-Spectrum Insect Control

Protect plant health and seedlings against a range of crop-damaging insect pests with Phalanx™ during the most vulnerable growing period.

- Aphids
- Bean Leaf Beetle
- Grape Colaspis
- White Grubs
- Leafhoppers
- Wireworm
- Thrips
- Seed Corn Maggot

2023–2024 Replicated Data | 65 US Locations



This is data from a Corteva Agriscience trial, 2023-2024 in 65 U.S. locations.

Application Rates

	Use Rate		Units			Density (lbs/gal)
	CWT	140K seed	per gallon	15 gallon keg	30 gallon keg	
Titan Pro Fungicide + Insecticide Package	3.9	1.95	65.6	985	1,969	9.38

Lumisena®

FUNGICIDE SEED TREATMENT

LumiTreo™

FUNGICIDE SEED TREATMENT

Phalanx™

INSECTICIDE SEED TREATMENT

Lumiante®

FUNGICIDE SEED TREATMENT

Visit [corteva.us](https://www.corteva.us)

®/™ Trademarks of Corteva Agriscience and its affiliated companies. CruiserMaxx, Vibrance is a trademark of a Syngenta Group Company.

This reference guide is not intended as a substitute for the product label for the product(s) referenced herein. Product labels for the above product(s) contain important precautions, directions for use, and product warranty and liability limitations, which must be read before using the product(s). Applicators must be in possession of the product label(s) at the time of application. Always read and follow all label direction and precautions for use when using any pesticide alone or in tank-mix combinations.



The foregoing is provided for informational use only. Please contact your Corteva sales professional for information and suggestions specific to your operation. Product performance is variable and depends on many factors such as moisture and heat stress, soil type, management practices and environmental stress as well as disease and pest pressures. Individual results may vary. Not all products are registered for sale or use in all states. Contact your state pesticide regulatory agency to determine if a product is registered for sale or use in your state. Always read and follow label directions. ©2025 Corteva. 031508 SAT (08/25)